

Leader of the Pack:

Which university pays its general staff the best?

Ian R Dobson

Adjunct Professional Staff Member – Monash University

Honorary Research Fellow – Federation University Australia

Salaries & Staff Profile:

Wide variation between universities

Salaries data:

- available from university websites
- some universities ‘hide’ this information

Summary document provided by NTEU

Concept of ‘salary’:

- leave loadings and superannuation
- some universities quote a ‘salary package’
- non-salary benefits such as company cars not included

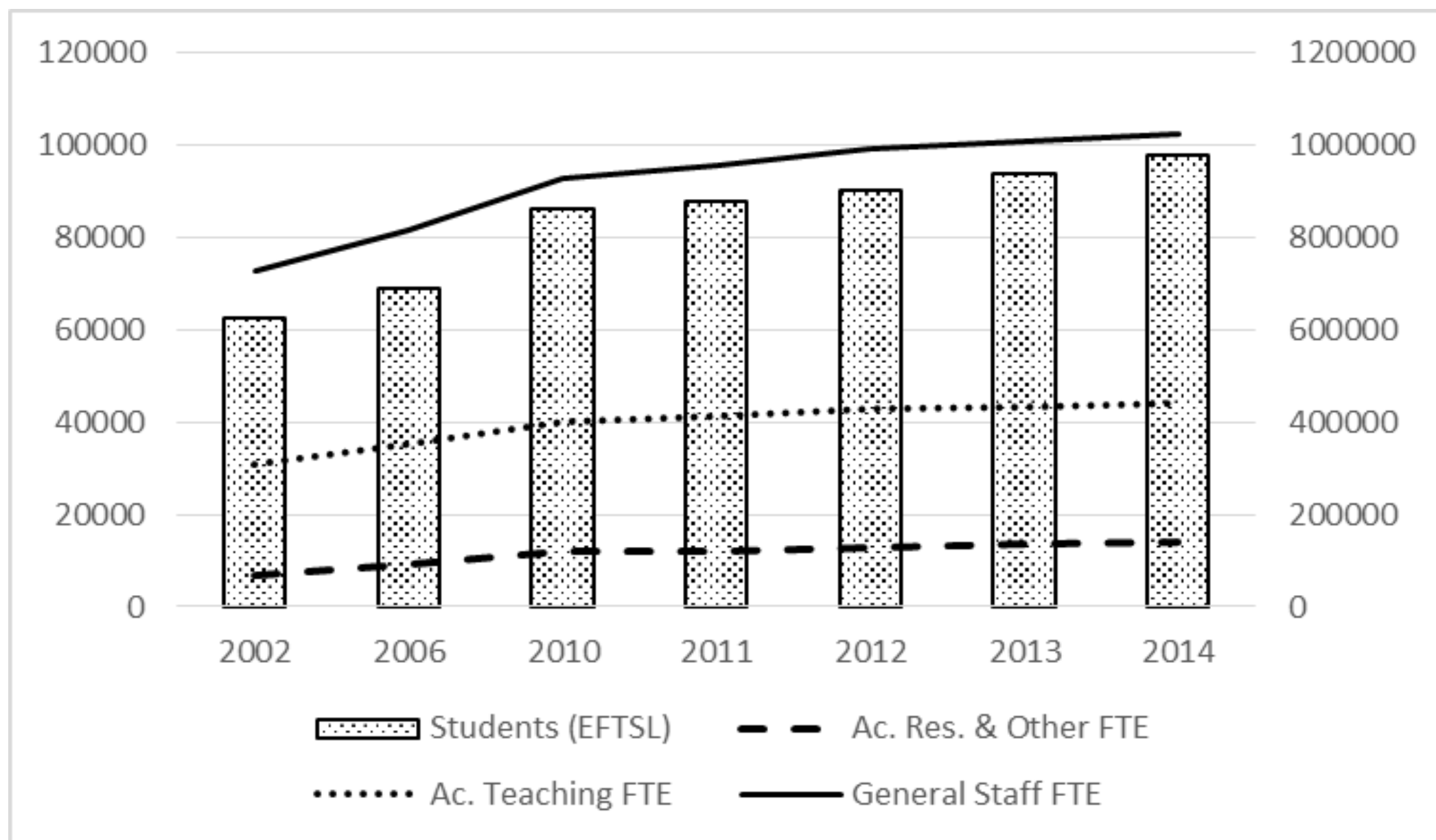
Staff data:

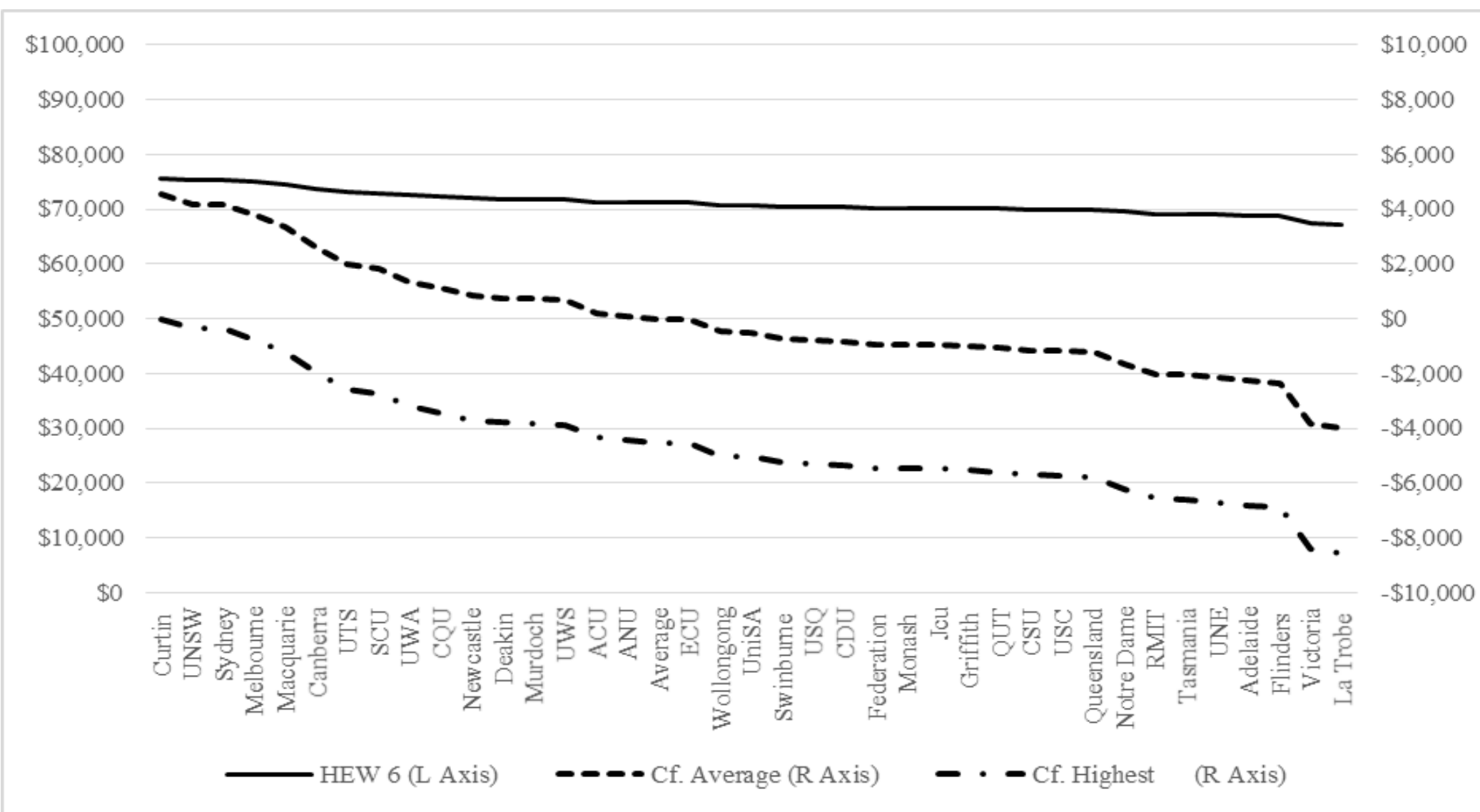
Department of Education & Training:

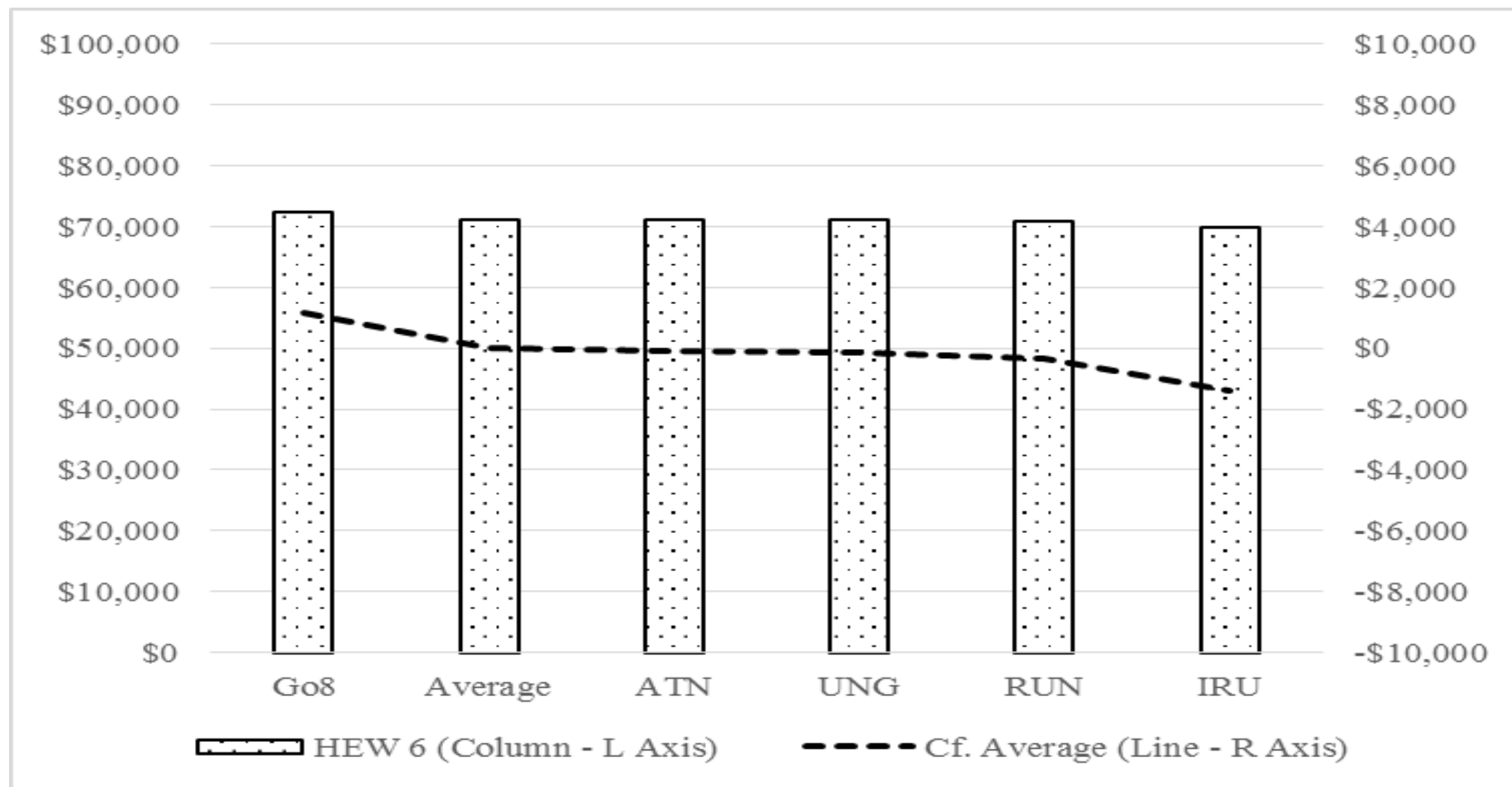
- uCube online spreadsheet system (limited)
- published tables
- customised purchased tables
- inappropriate reference to 'non-academic' staff

Students: 1,000,000 FTE

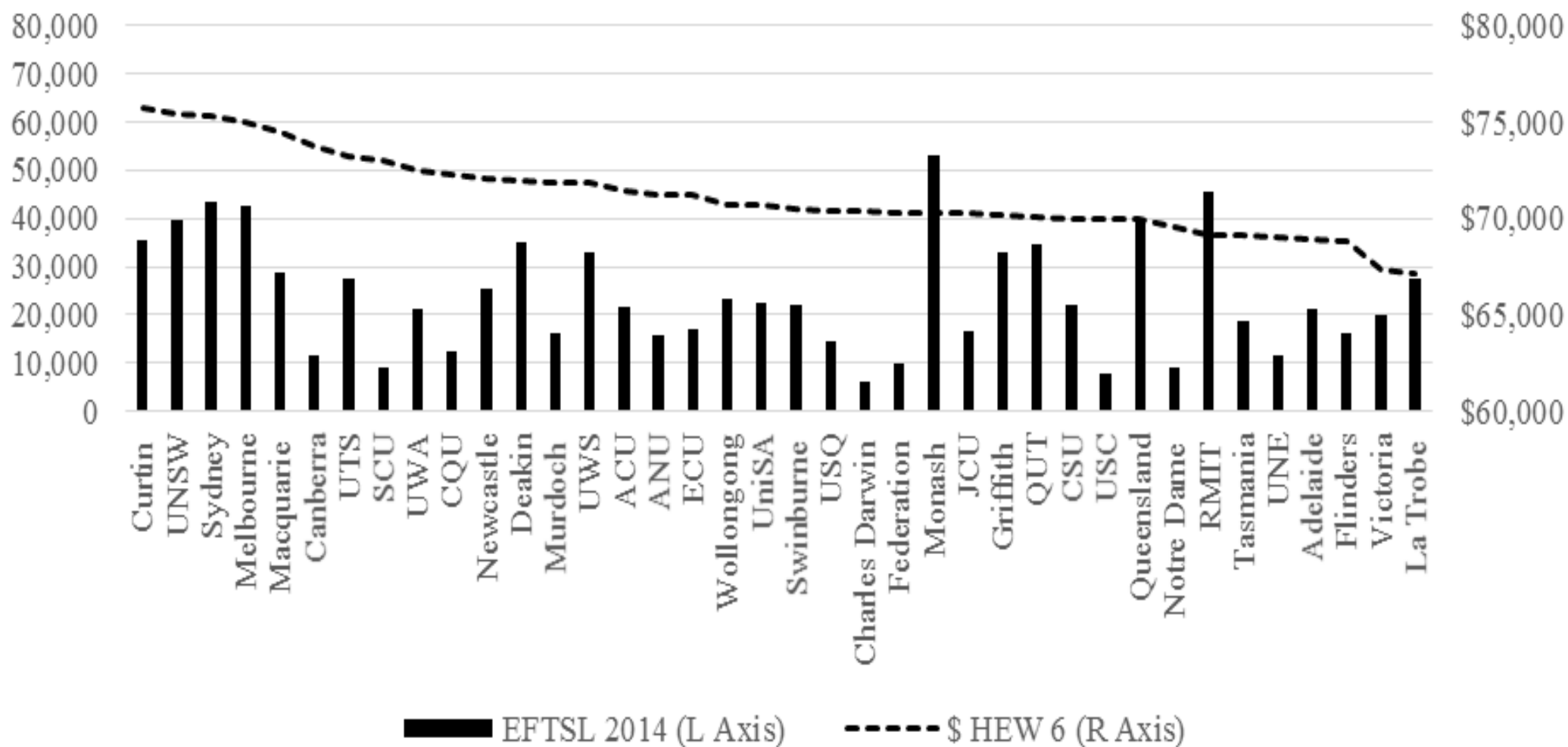
Staff: 120,000 FTE – 20,000 Casuals
= 100,000 full time & fractional full time
58,000 general staff







Size v. Salaries



	%<HEW5		
University	2006	2010	2014
Notre Dame	58%	49%	40%
UniSA	44%	39%	40%
Federation	47%	42%	37%
CSU	51%	43%	35%
Adelaide	42%	37%	34%
QUT	43%	38%	34%
SCU	42%	40%	33%
CDU	51%	39%	31%
Griffith	39%	36%	31%
Melbourne	40%	35%	30%
Tasmania	47%	40%	30%
JCU	42%	37%	30%
Flinders	44%	37%	29%
Wollongong	39%	34%	29%
UWA	41%	35%	29%
USC	36%	31%	28%
ECU	38%	32%	28%
Murdoch	38%	30%	27%
TOTAL	37%	31%	26%
ANU	35%	30%	26%
UNSW	30%	25%	25%
CQU	37%	30%	25%
UNE	44%	37%	24%
Newcastle	31%	27%	24%
La Trobe	42%	35%	24%
Curtin	37%	29%	24%
QUT	36%	28%	23%
Swinburne	33%	30%	23%
Sydney	31%	26%	23%
USQ	46%	32%	23%
Monash	41%	31%	21%
Deakin	37%	26%	21%
Macquarie	27%	24%	21%
Victoria	31%	27%	20%
UWS	26%	17%	18%
Canberra	36%	28%	16%
ACU	31%	23%	16%
UTS	18%	14%	13%
RMIT	23%	15%	11%