

# Collaborative Teaching and Learning Spaces: A New Campus Typology

**WOODS  
BAGOT™**



01

Why is there a need for collaborative teaching and learning spaces?

02

A collaborative approach

03

Case Study Examples

04

How do these spaces best fit on campus?

# 01

Why is there a need for collaborative teaching and learning spaces?



01

02

A collaborative approach

03

- Designers
- Educators
- Facility Managers

04

# Define the educational vision

Define the educational vision

Invest the time upfront

Define the educational vision

Invest the time upfront

Engagement

01

- University of Melbourne
- School of Engineering

02

- University of Melbourne
- School of Environments and Design

03

- Victoria University
- Professional Development Unit

04

Case Study Examples

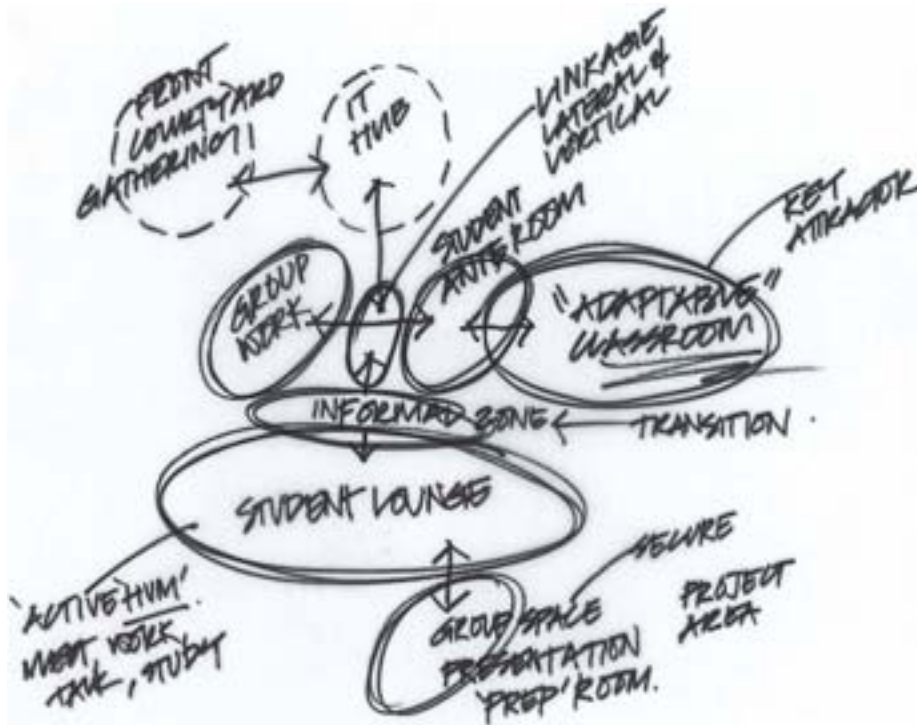


# University of Melbourne School of Engineering



Create a compelling,  
innovative learning  
environment that  
fosters  
communication,  
collaboration and  
collegiality

# University of Melbourne School of Engineering



- How will the space work for the students?
- Spaces that underpin pedagogical outcomes
- Classrooms configured for a collaborative studio culture
- Informal learning spaces that support a variety of working styles
- Abundant social space that forge a strong sense of collegiality, community and personal ownership
- Multi-phase project targeting 1<sup>st</sup> years students

# First Floor Plan

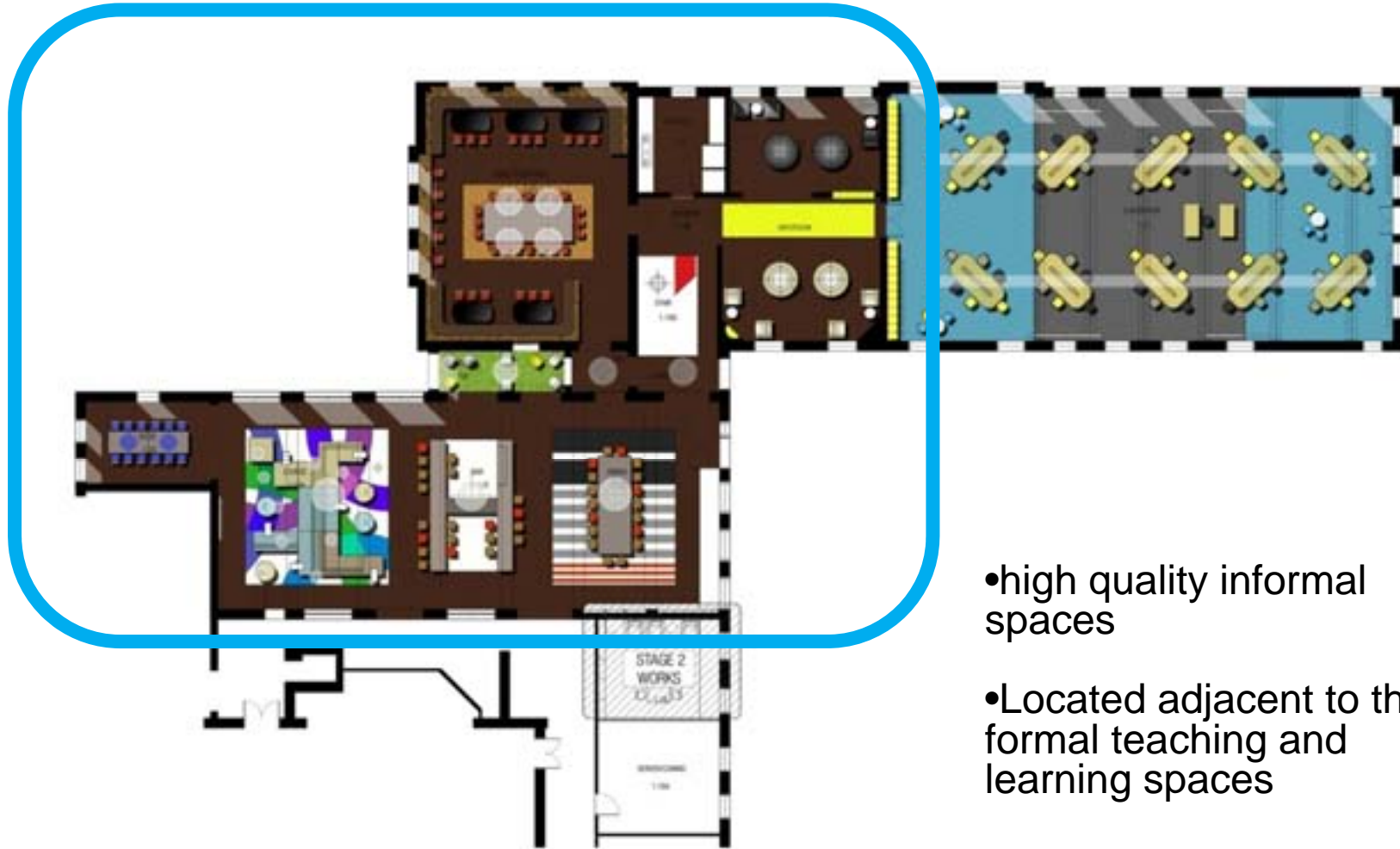


# 1<sup>st</sup> year Classroom



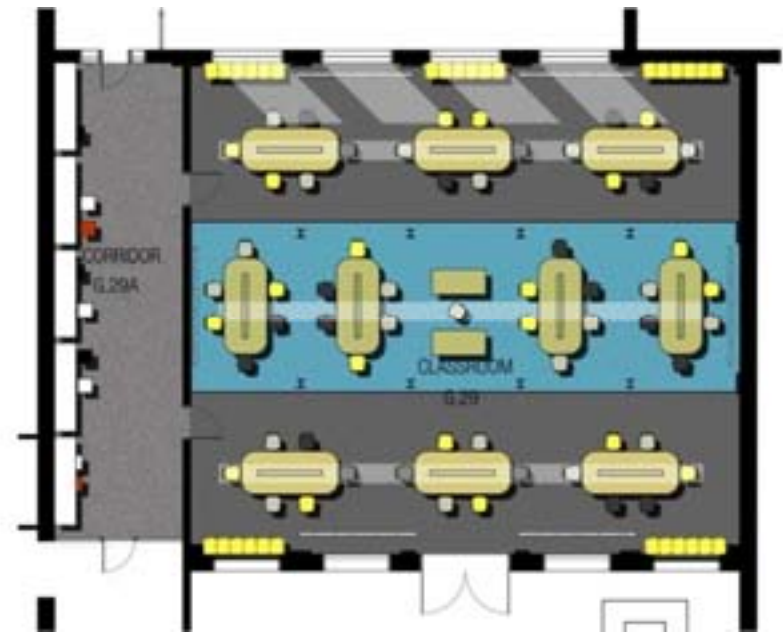
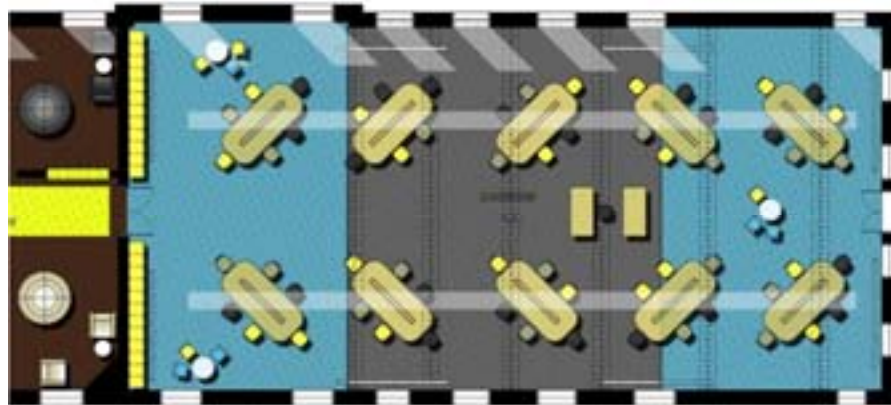


# Informal Spaces



- high quality informal spaces
- Located adjacent to the formal teaching and learning spaces

# 1<sup>st</sup> year Classrooms

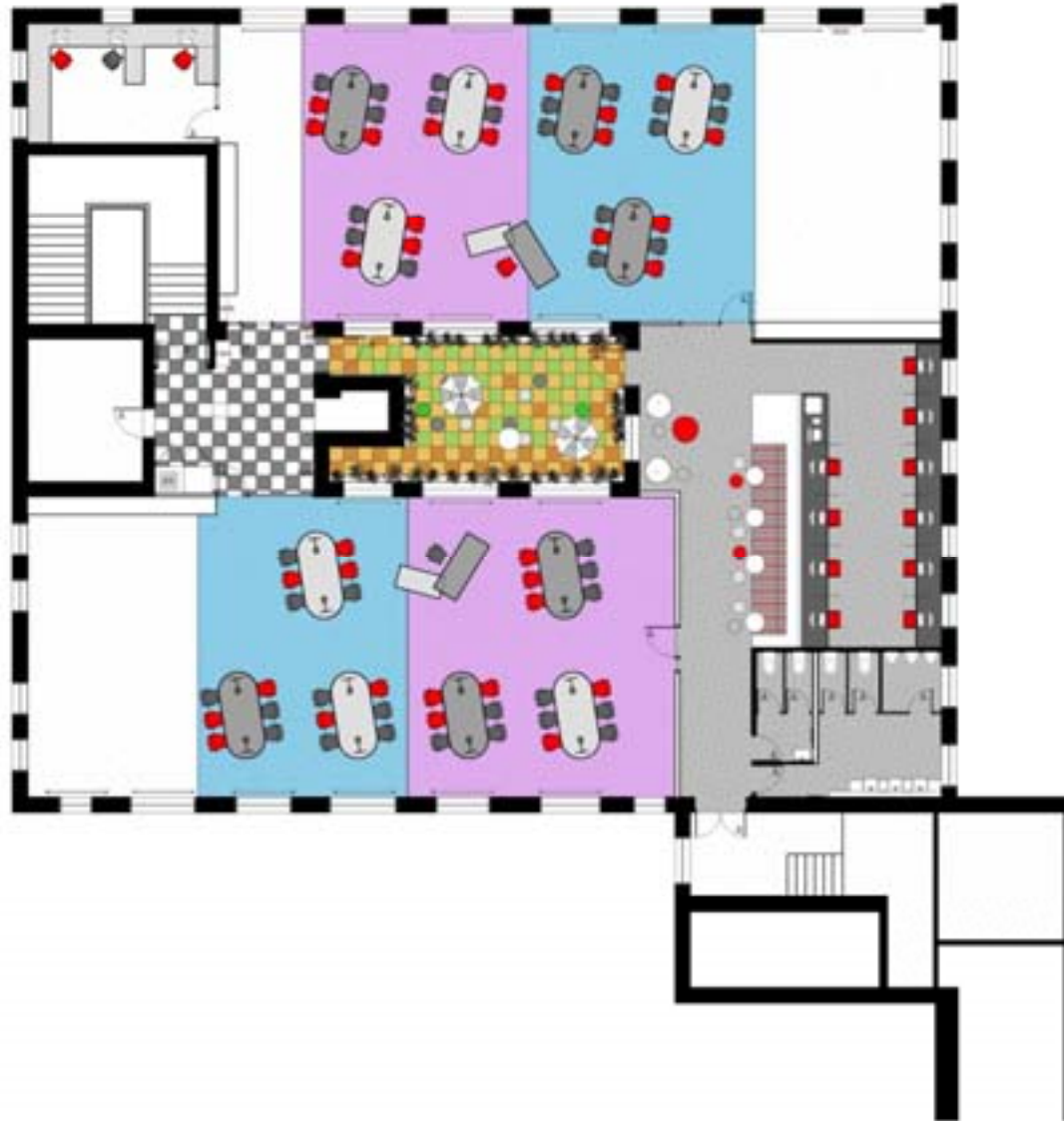








# 2<sup>nd</sup> year Classroom



Copyright  
WOODS BAGOT PTY LTD ABN 47 007 861 194  
This  
document contains confidential information and is not to be distributed  
outside the organization without the express written consent of Woods Bagot.

Date Issued: 21-08-08 Date: 21-08-08  
SCHOOL OF ENGINEERING  
MELBOURNE UNIVERSITY

2ND YEAR LEARNING SPACES  
SCHOOL OF ENGINEERING  
MELBOURNE UNIVERSITY  
BUILDING NO. 10000000

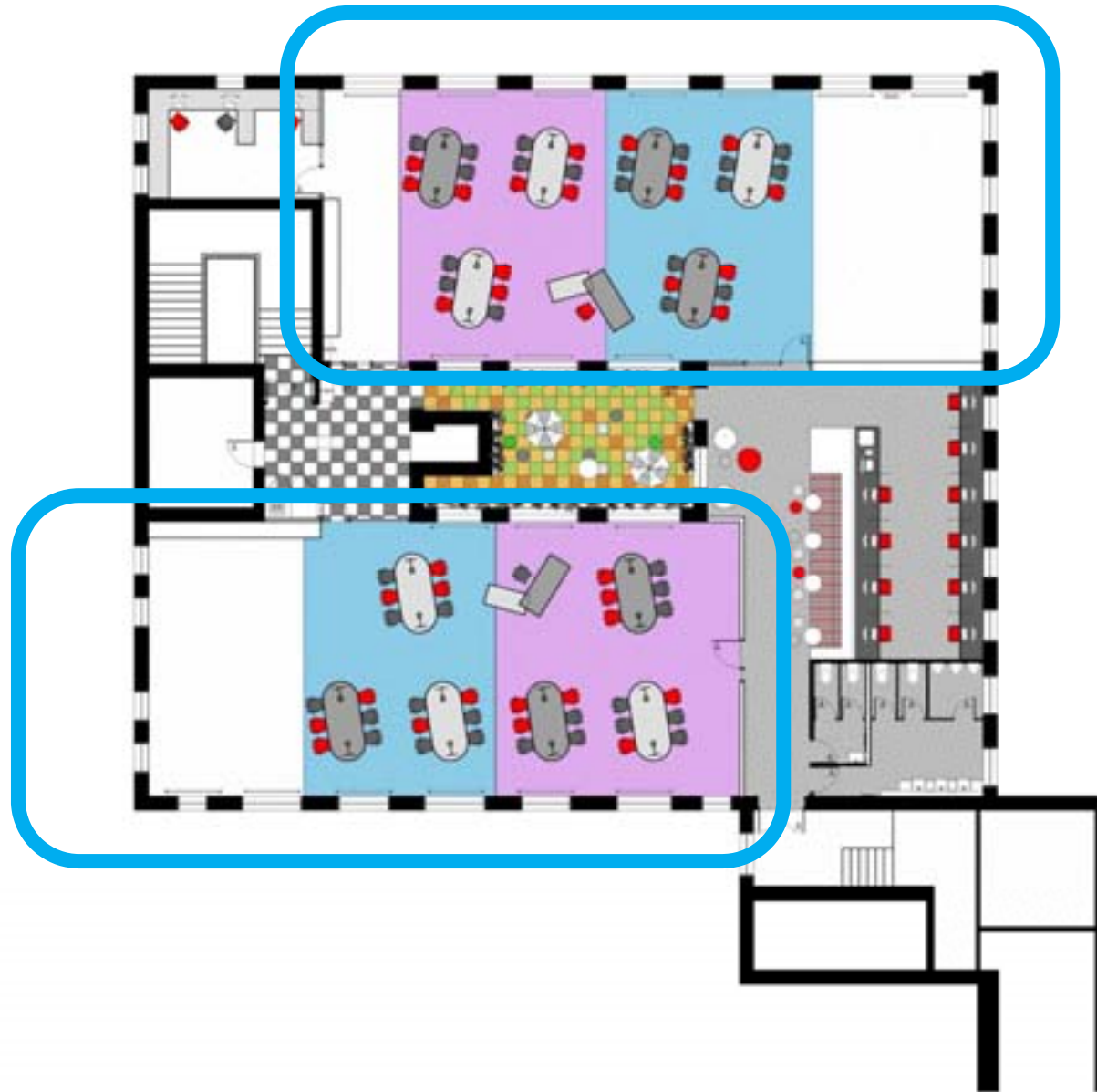
**WOODS BAGOT** AUSTRALIA  
ASIA  
MIDDLE EAST  
EUROPE

Drawing No.  
FLOOR PLAN  
LEVEL 2

Date prepared: 21-08-08 Checked: Approved:   
Scale: 1:100  
8.42 sheet size 300mm x 420mm

Project number: 3-30-1306 Drawing number: 102200 A  
Title: PRELIMINARY

# 2<sup>nd</sup> year Classroom



Copyright  
WOODS BAGOT ARCHITECTS AND ASSOCIATES  
2008  
UNIVERSITY OF MELBOURNE, UNIVERSITY OF VICTORIA, UNIVERSITY OF QUEENSLAND  
UNIVERSITY OF WESTERN AUSTRALIA, UNIVERSITY OF ADELAIDE

SCHOOL OF ENGINEERING  
MELBOURNE UNIVERSITY

2ND YEAR LEARNING SPACES  
SCHOOL OF ENGINEERING  
MELBOURNE UNIVERSITY  
MELBOURNE VIC 3010

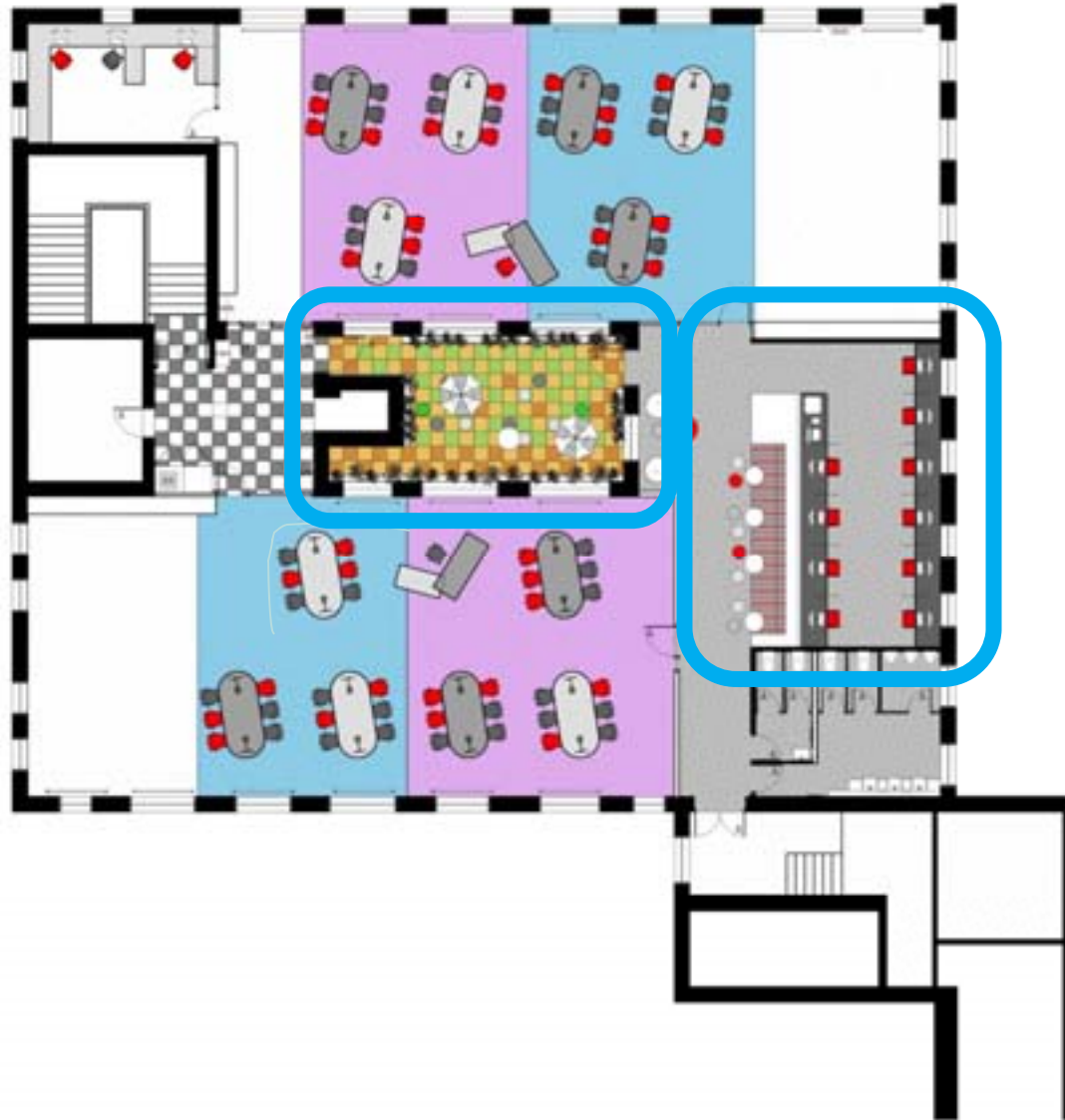
**WOODS BAGOT** AUSTRALIA  
ASIA  
MIDDLE EAST  
EUROPE

FLOOR PLAN  
LEVEL 2

Date prepared: 21-08-08  
Scale: 1:100  
84.62 sheet size  
300mm x 450mm

Project number: 3-30-1306  
Drawing number: 102200 A  
Revision: PRELIMINARY

# Social Spaces



Copyright  
WOODS BAGOT PTY LTD ABN 41 007 851 191  
This  
DOCUMENT IS NOT A FINAL DESIGN. IT IS A PRELIMINARY DESIGN. IT IS NOT TO BE USED FOR CONSTRUCTION OR FOR ANY OTHER PURPOSE. IT IS THE PROPERTY OF WOODS BAGOT PTY LTD AND IS NOT TO BE REPRODUCED OR TRANSMITTED IN ANY FORM OR BY ANY MEANS, ELECTRONIC OR MECHANICAL, INCLUDING PHOTOCOPYING, RECORDING, OR BY ANY INFORMATION STORAGE AND RETRIEVAL SYSTEM, WITHOUT PERMISSION IN WRITING FROM WOODS BAGOT PTY LTD.

Date	Revised	By	Appr'd
21-08-08			

SCHOOL OF ENGINEERING  
MELBOURNE UNIVERSITY

2ND YEAR LEARNING SPACES  
SCHOOL OF ENGINEERING  
MELBOURNE UNIVERSITY  
MELBOURNE VIC 3010

**WOODS BAGOT** AUSTRALIA  
ASIA  
MIDDLE EAST  
EUROPE

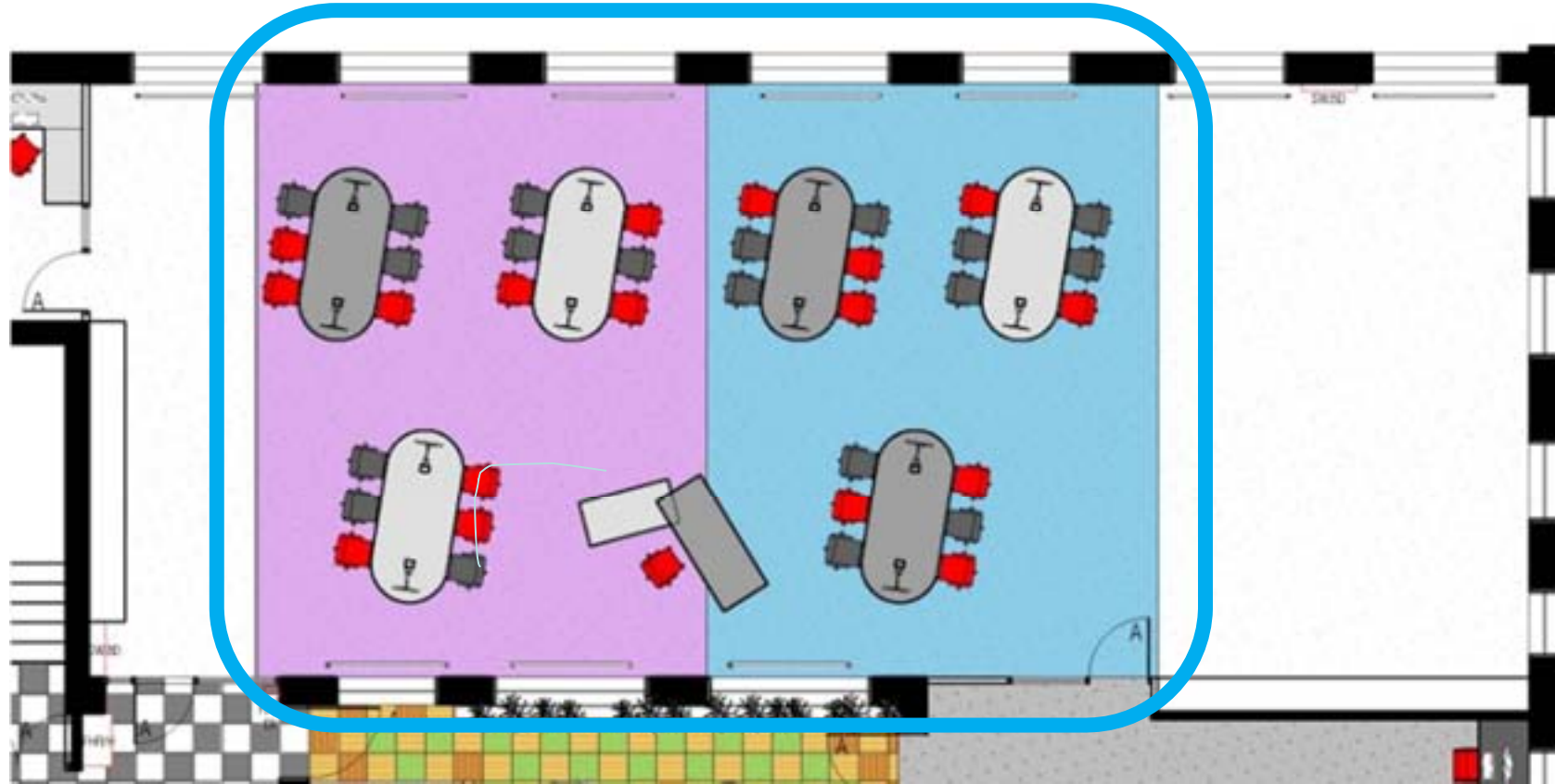
Drawing title  
**FLOOR PLAN  
LEVEL 2**

Date prepared: 21-08-08  
Scale: 1:100  
84.42 sheet size  
300mm x 420mm

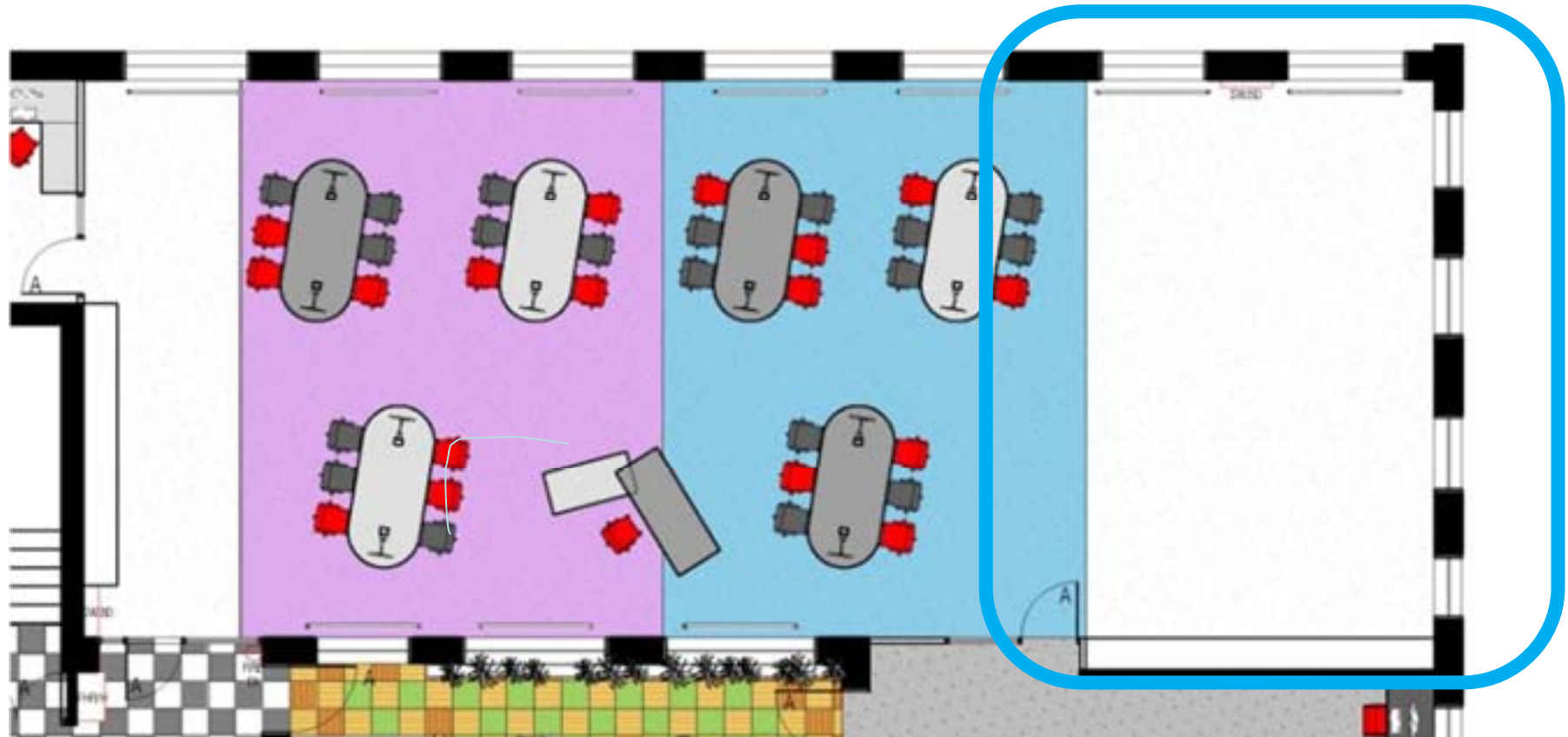
Project number: 3-30-1306  
Drawing number: 102200 A  
Revision: PRELIMINARY



## 2<sup>nd</sup> year Classroom



## 2<sup>nd</sup> year Classroom

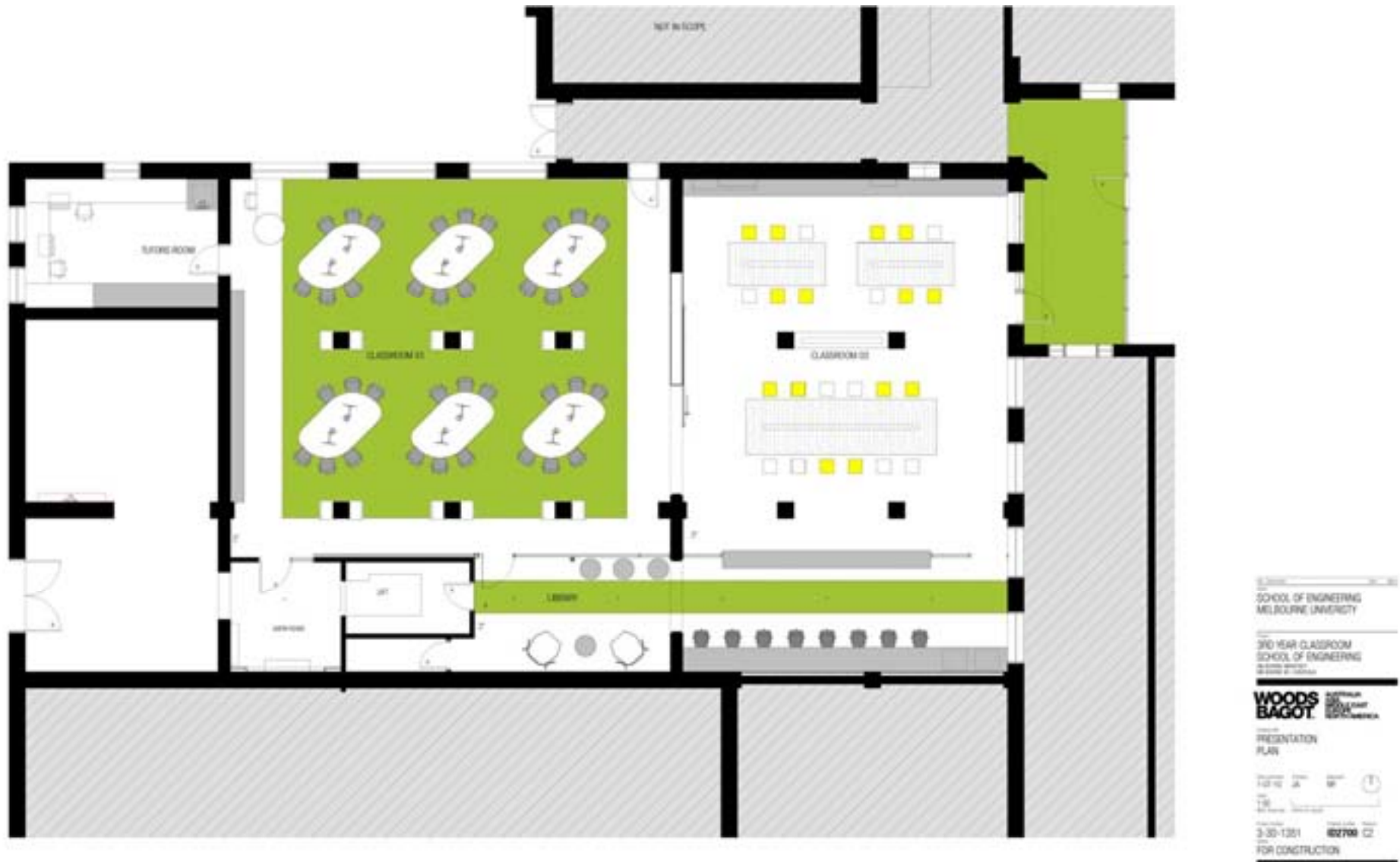








# 3rd year Classroom



# 3rd year Classroom



# 3rd year Classroom



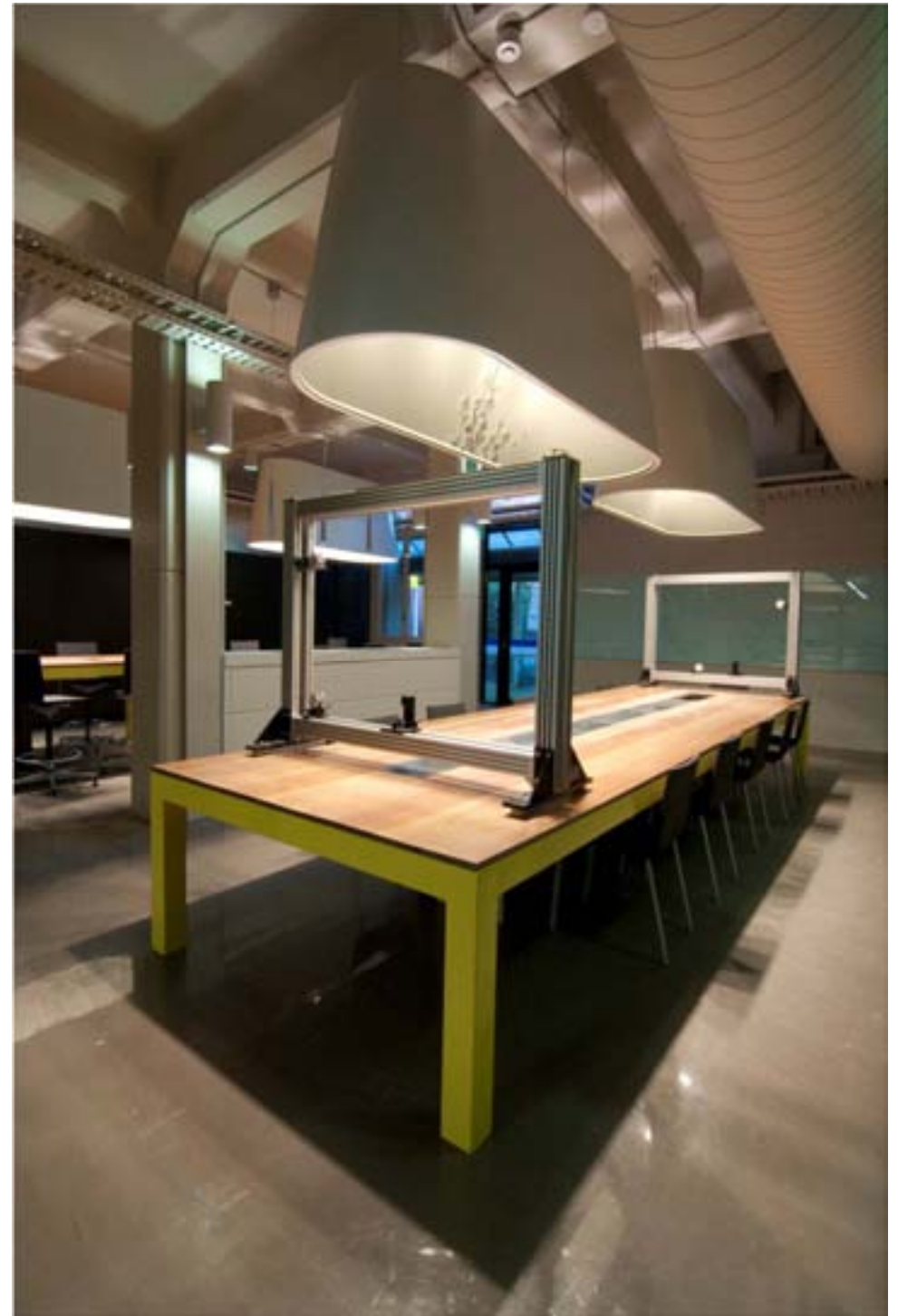
# Informal Space











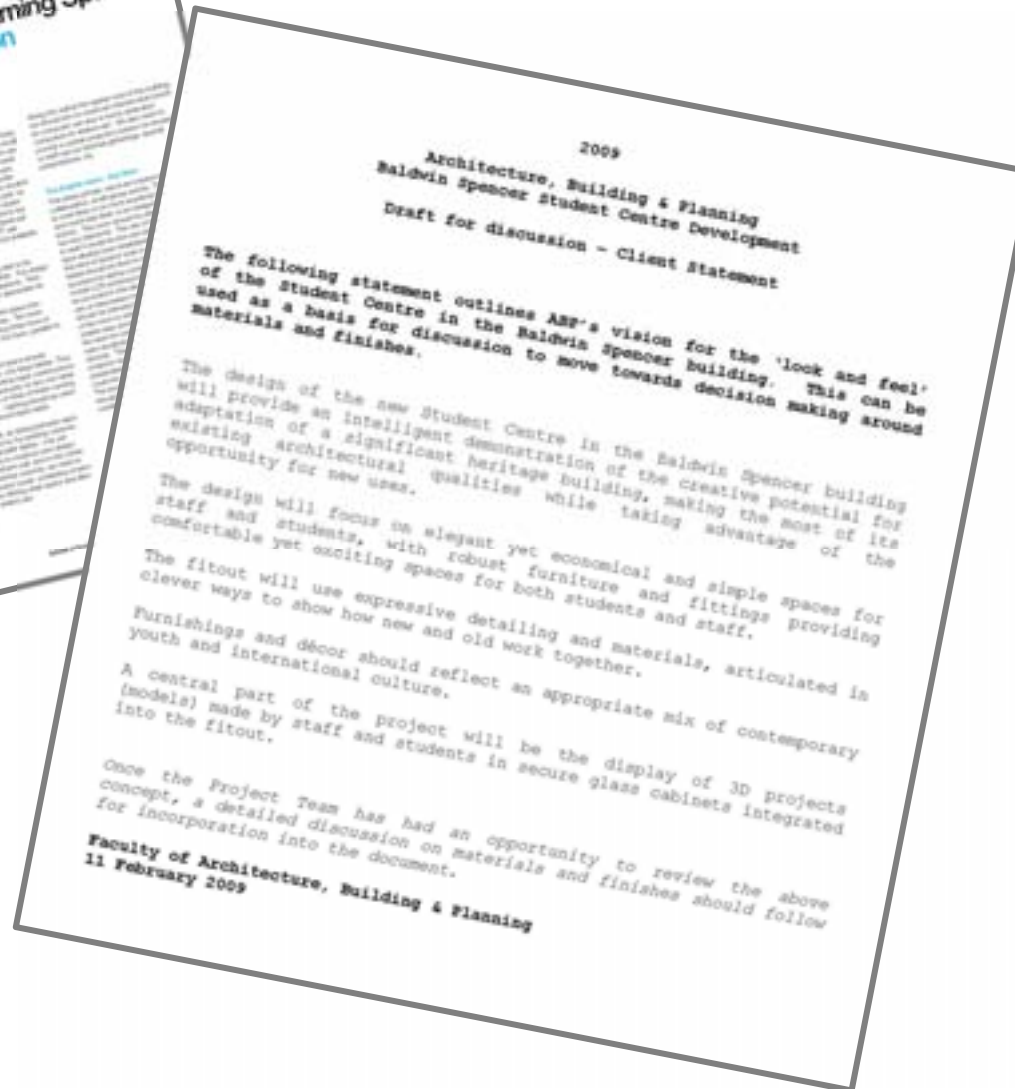
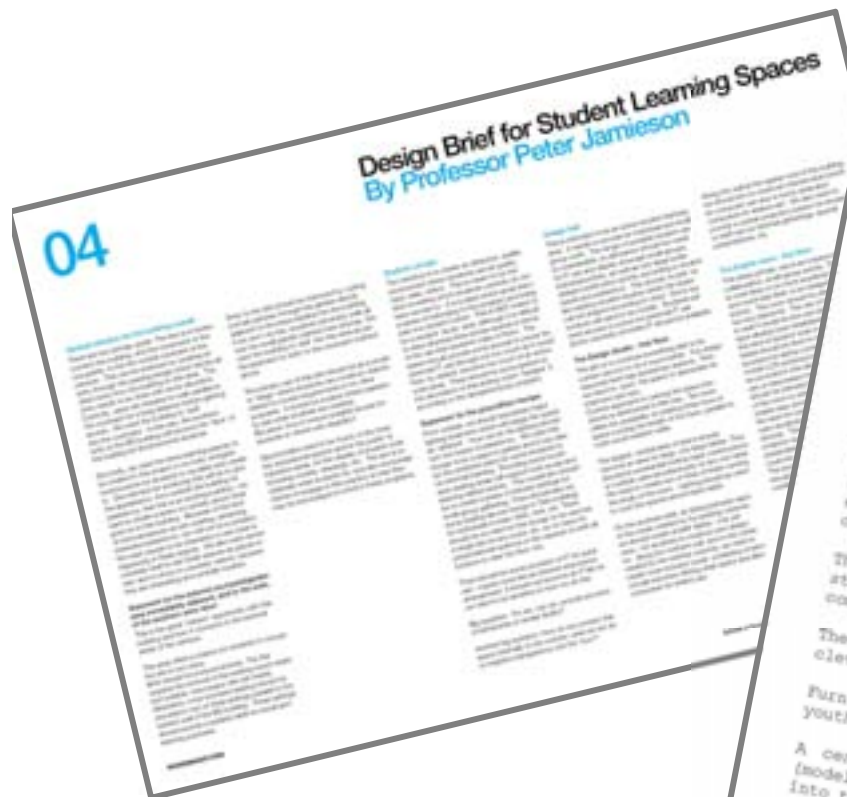


University of Melbourne  
School of Environments &  
Design

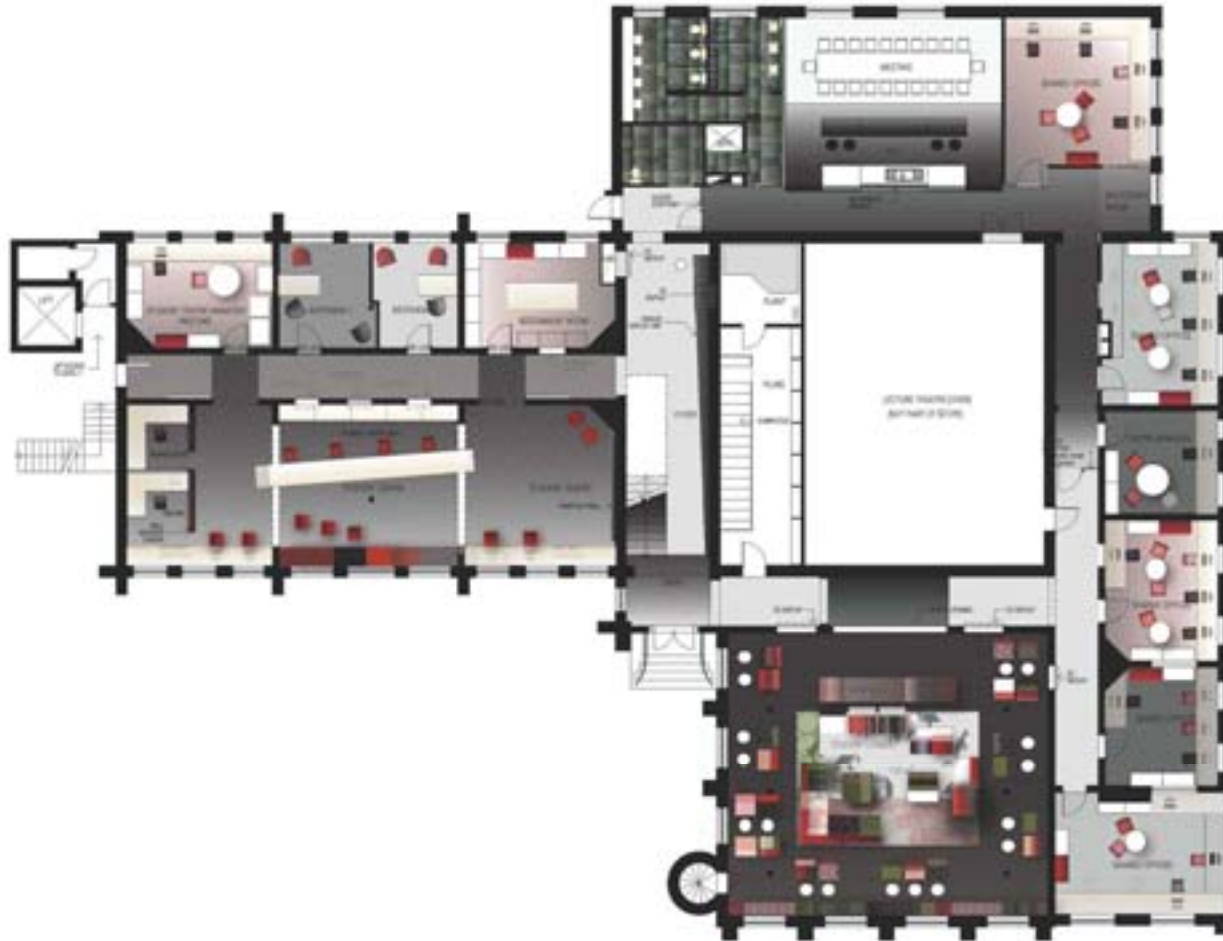




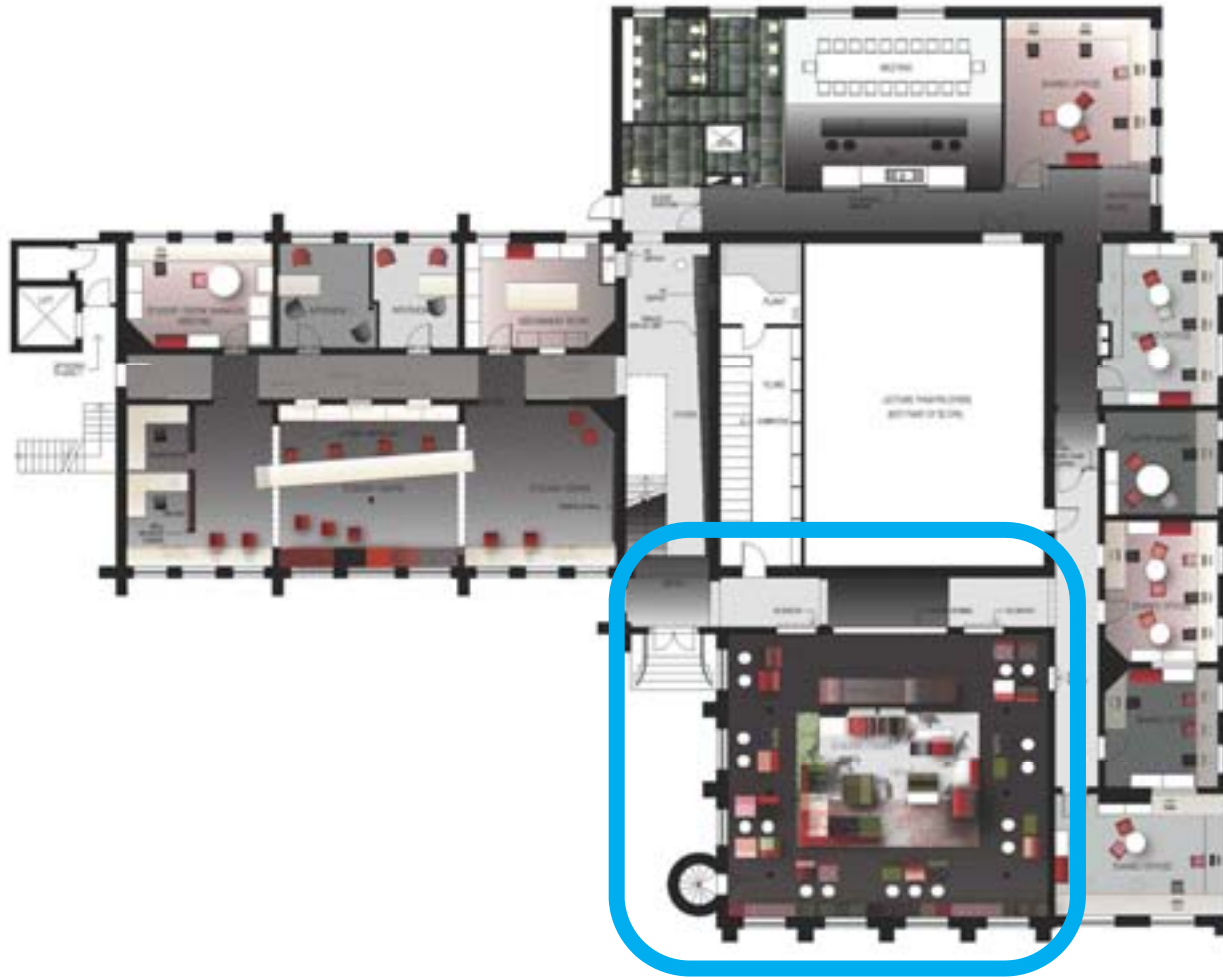
# University of Melbourne School of Environments & Design



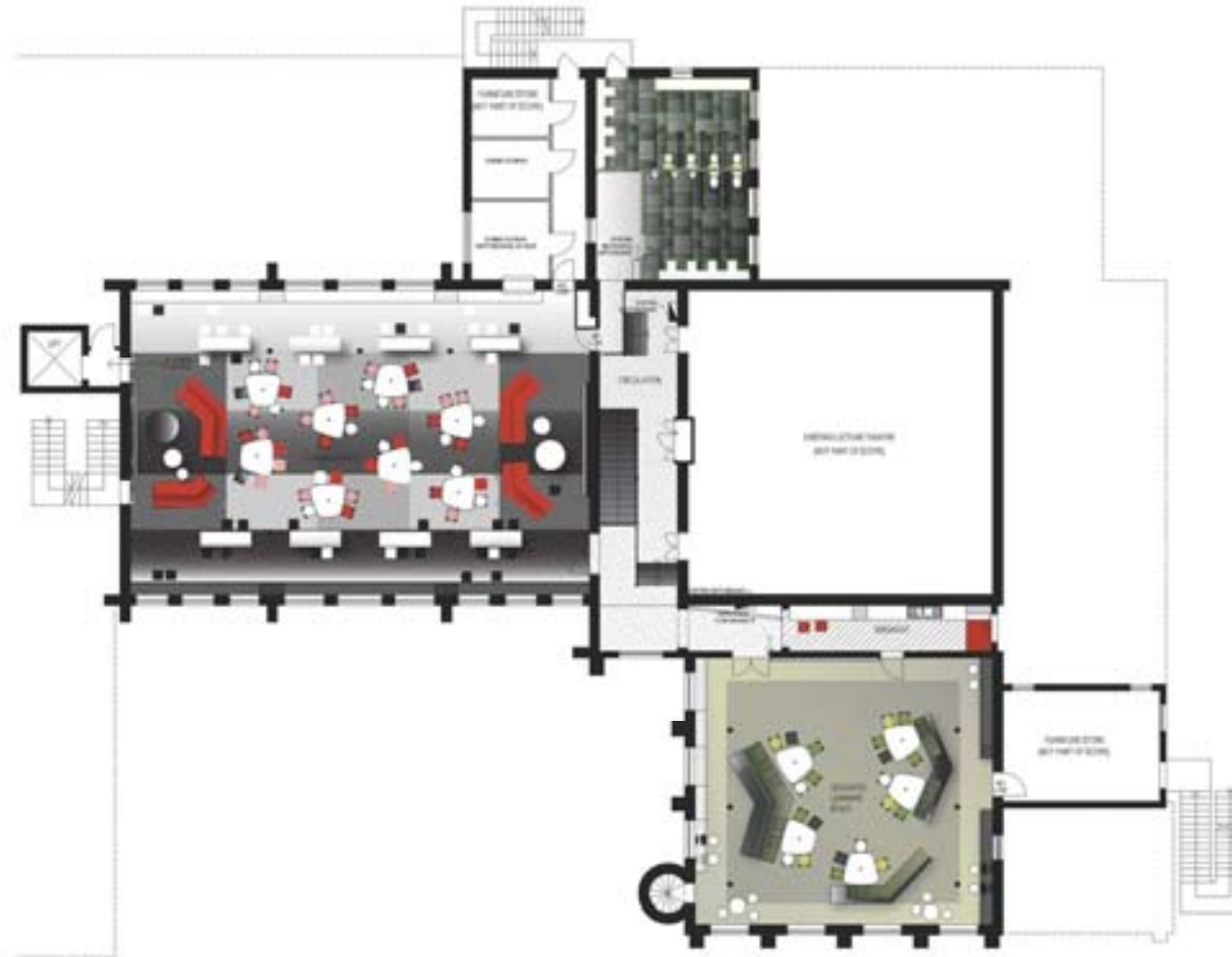
# Ground Floor Plan



# Student Lounge

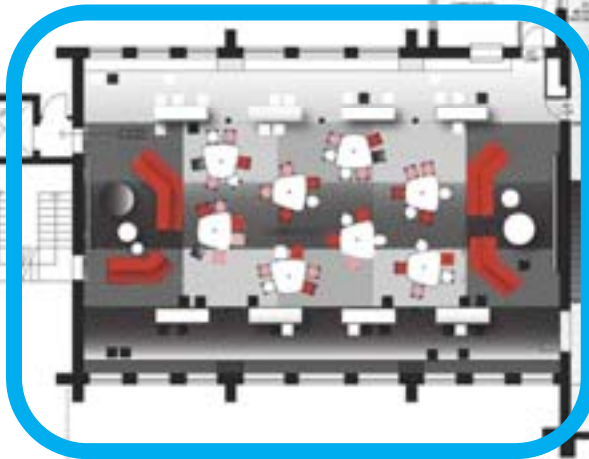


# First Floor Plan



# Collaborative teaching & learning

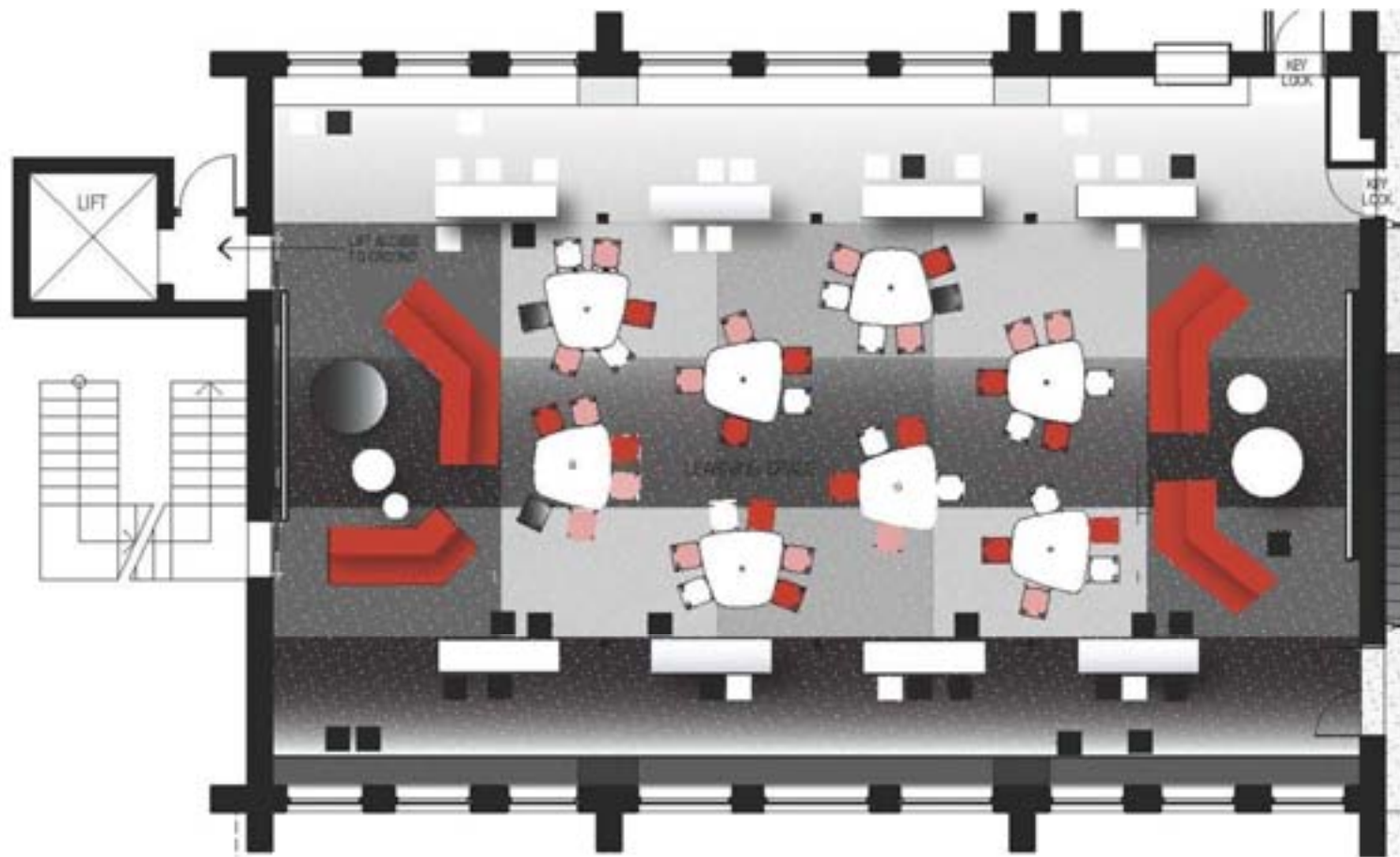
Design Hall



Dedicated Learning

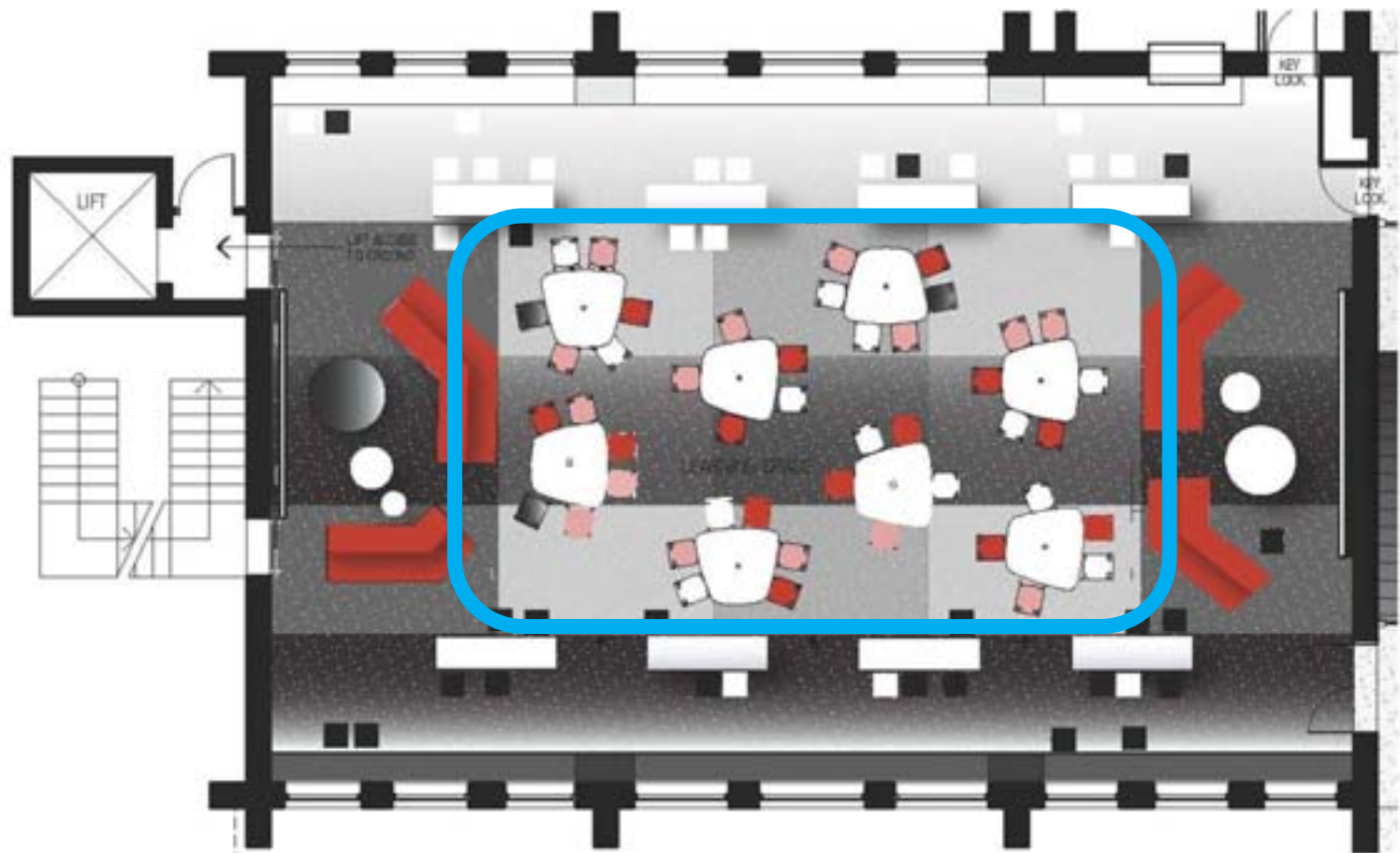


# Design Hall

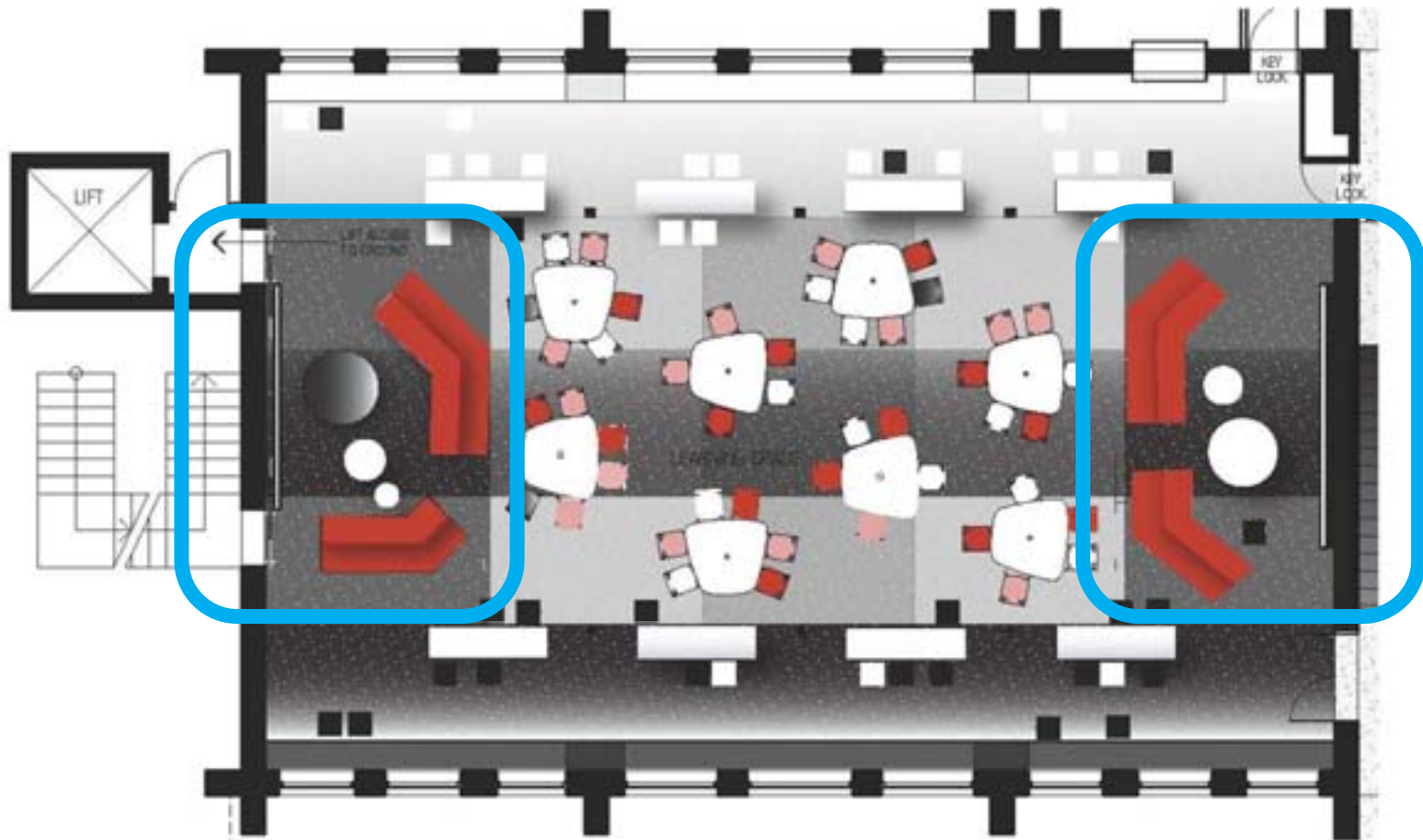




# Design Hall

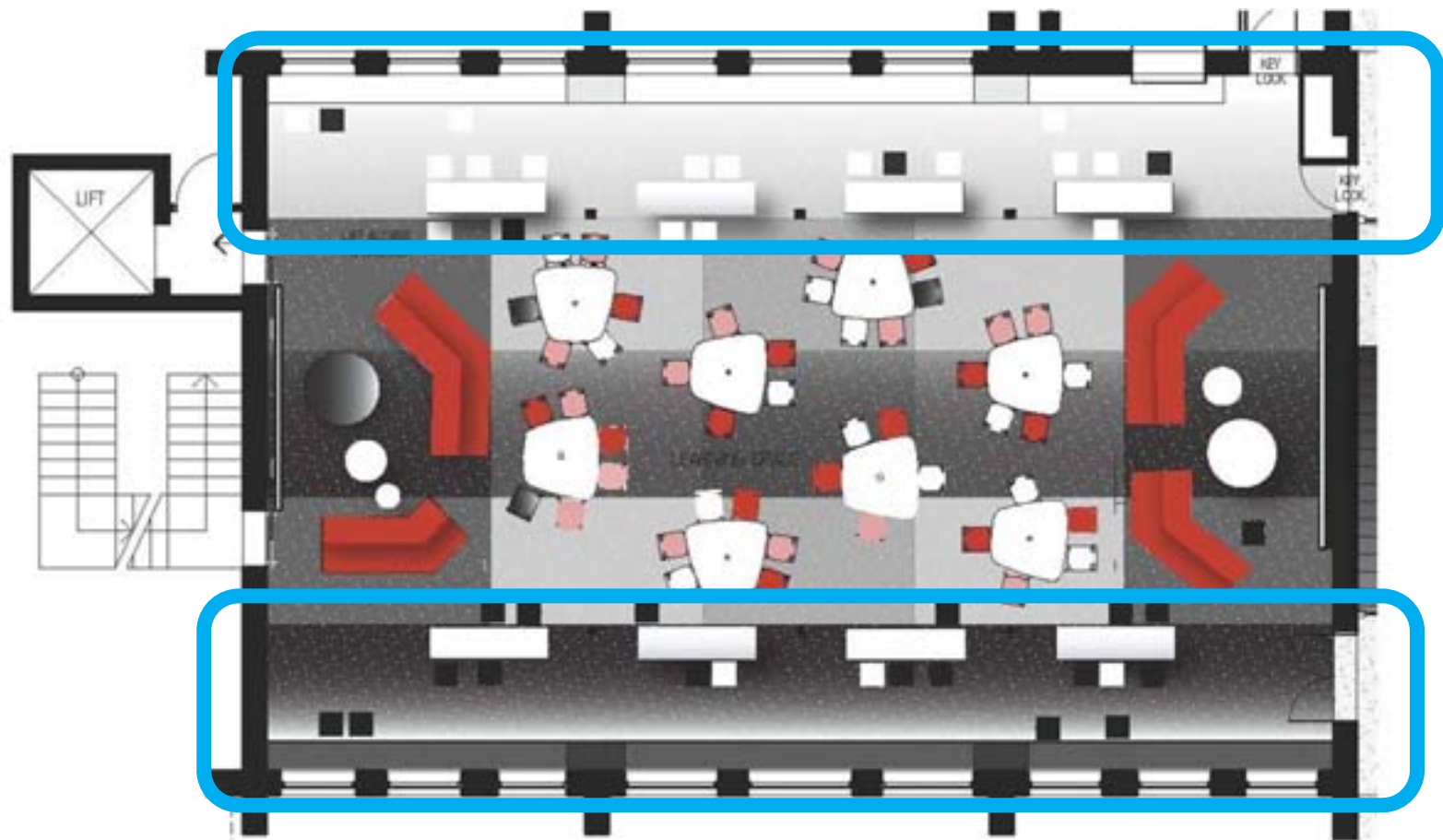


# Design Hall





# Design Hall

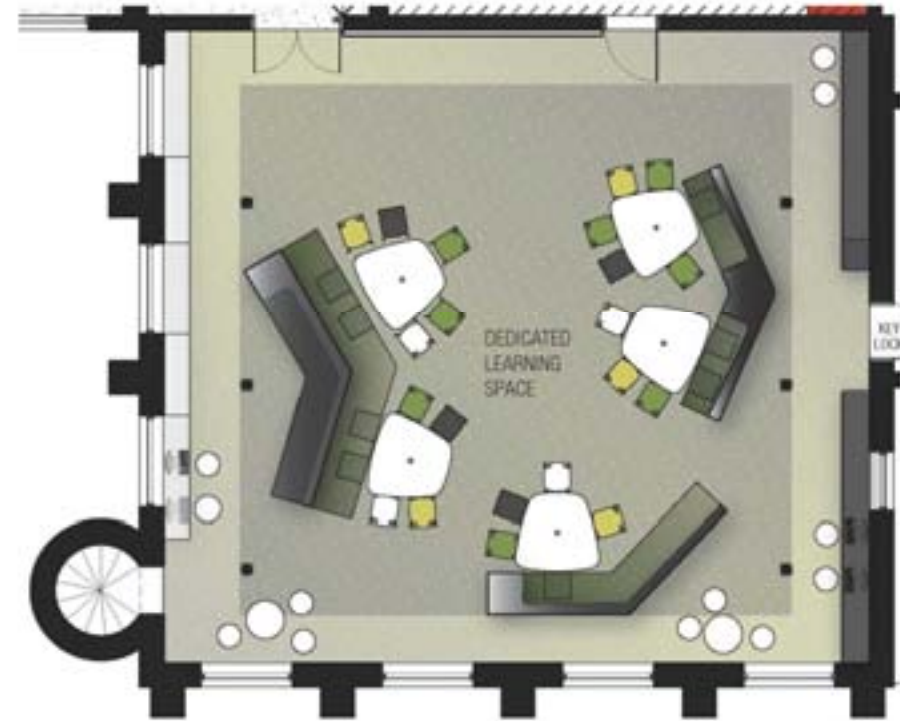




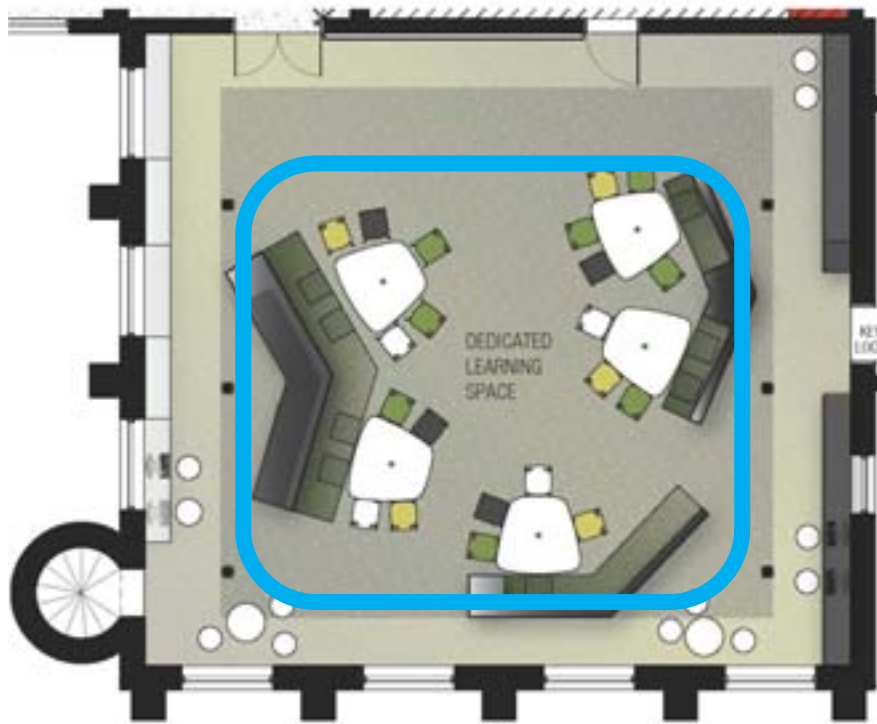




# Dedicated Learning



# Dedicated Learning



Formal teaching & learning



Breakout space









# Victoria University Professional Development Unit





The Professional Development Room is to be a 'Business Incubator' and include a variety of working spaces common in a modern workplace setting.



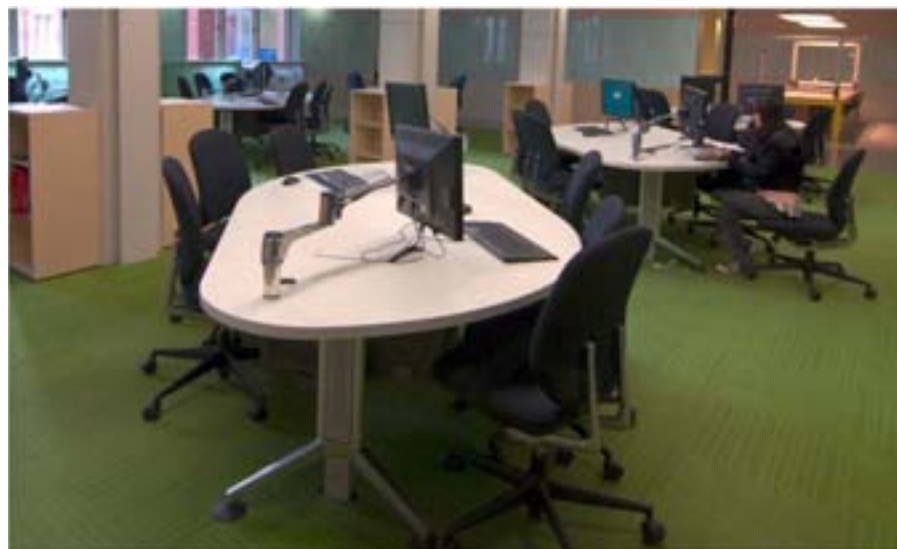
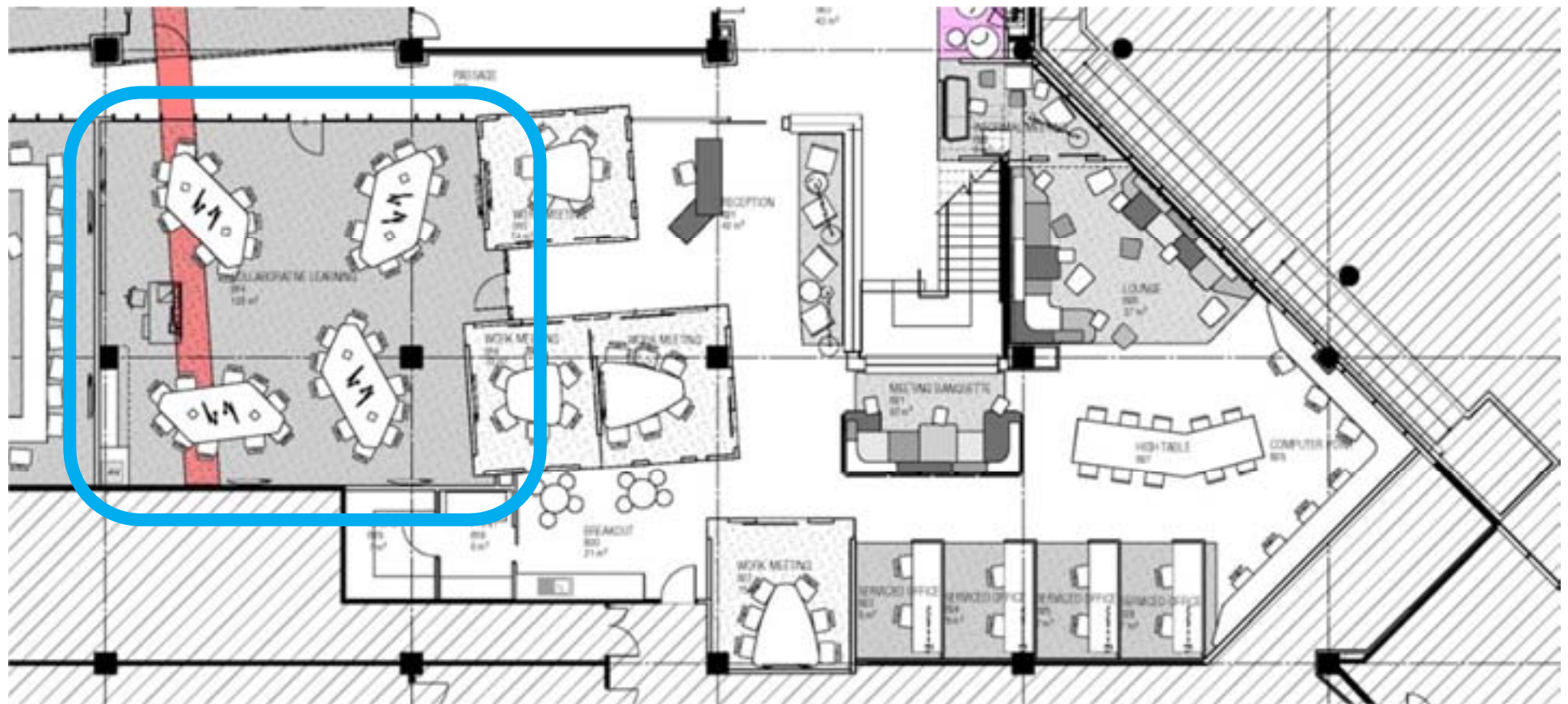
# Victoria University Professional Development Unit

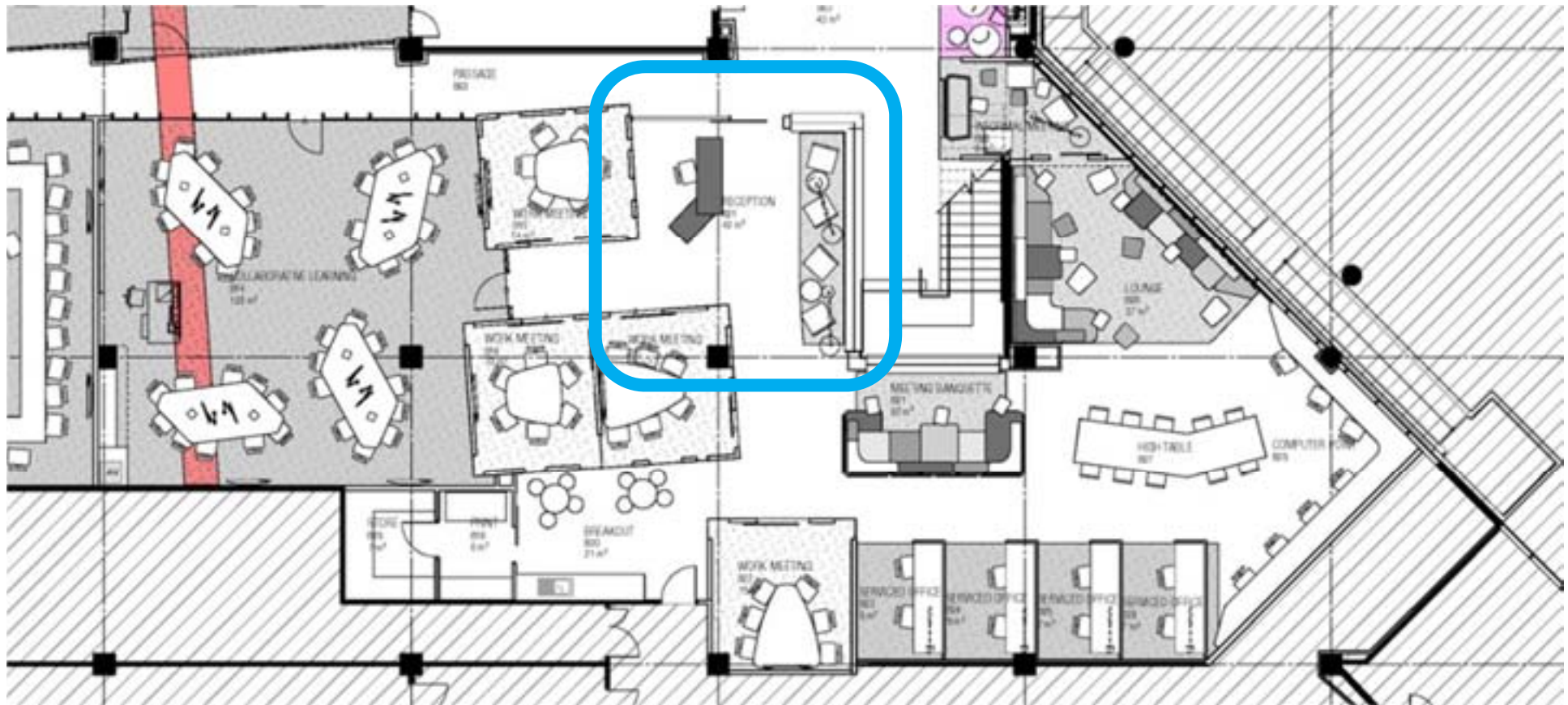


# Victoria University Professional Development Unit

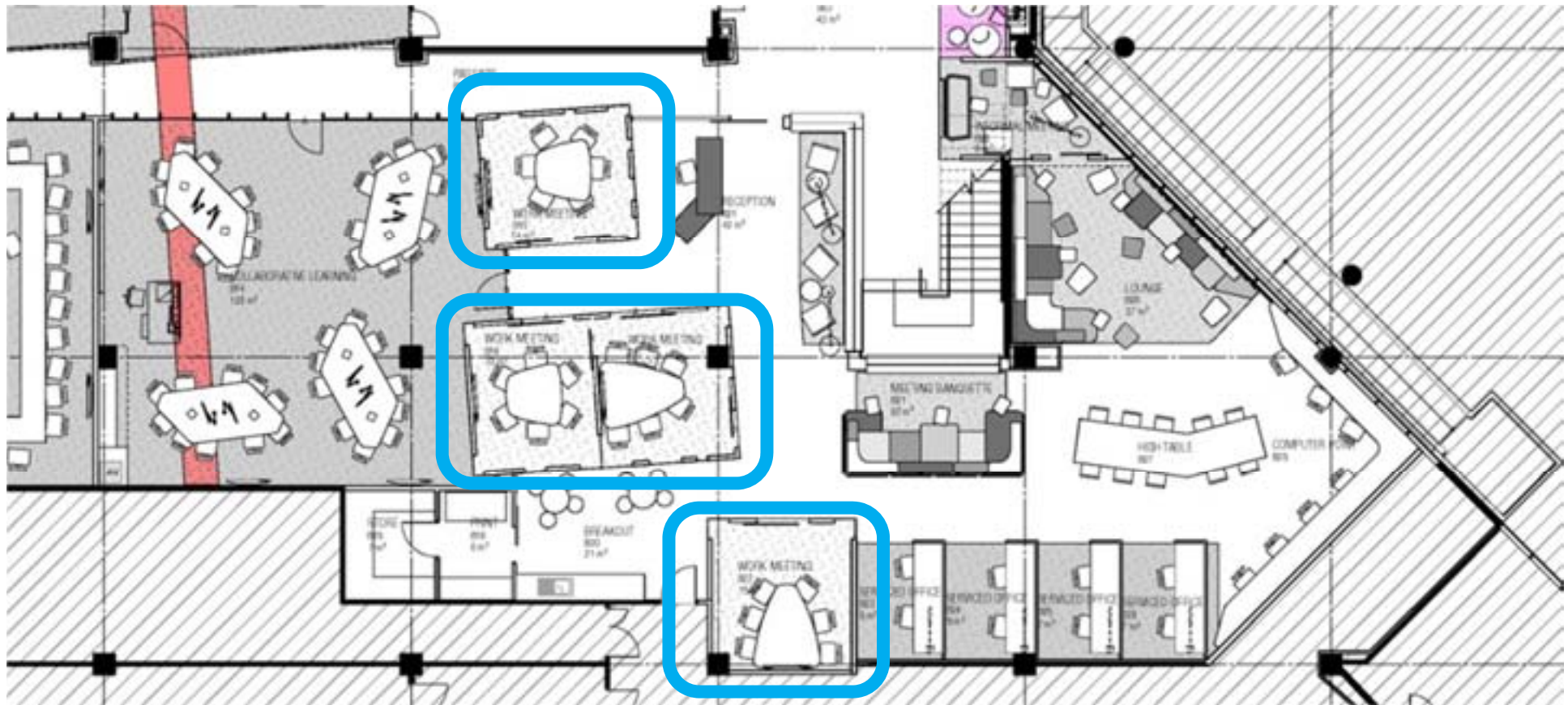




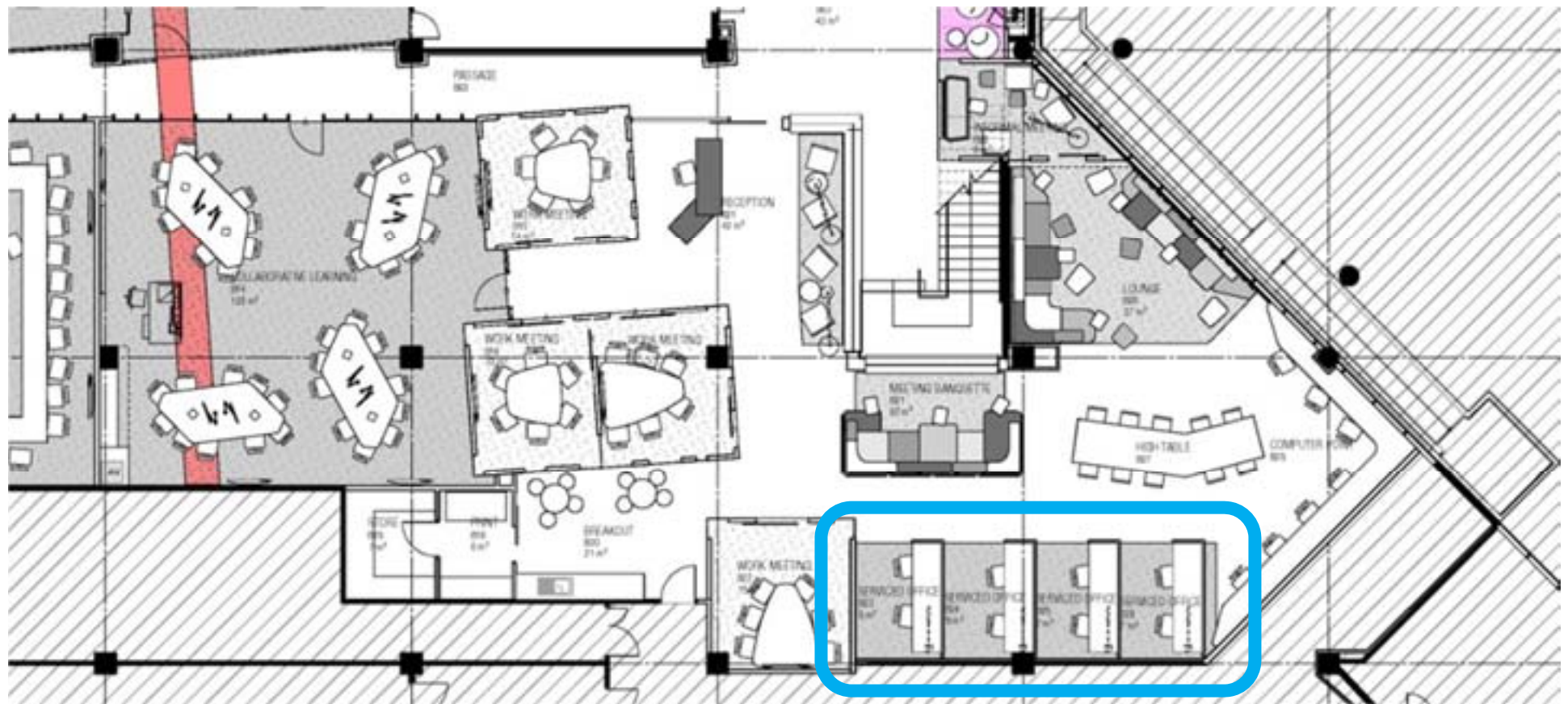






















01

02

03

04

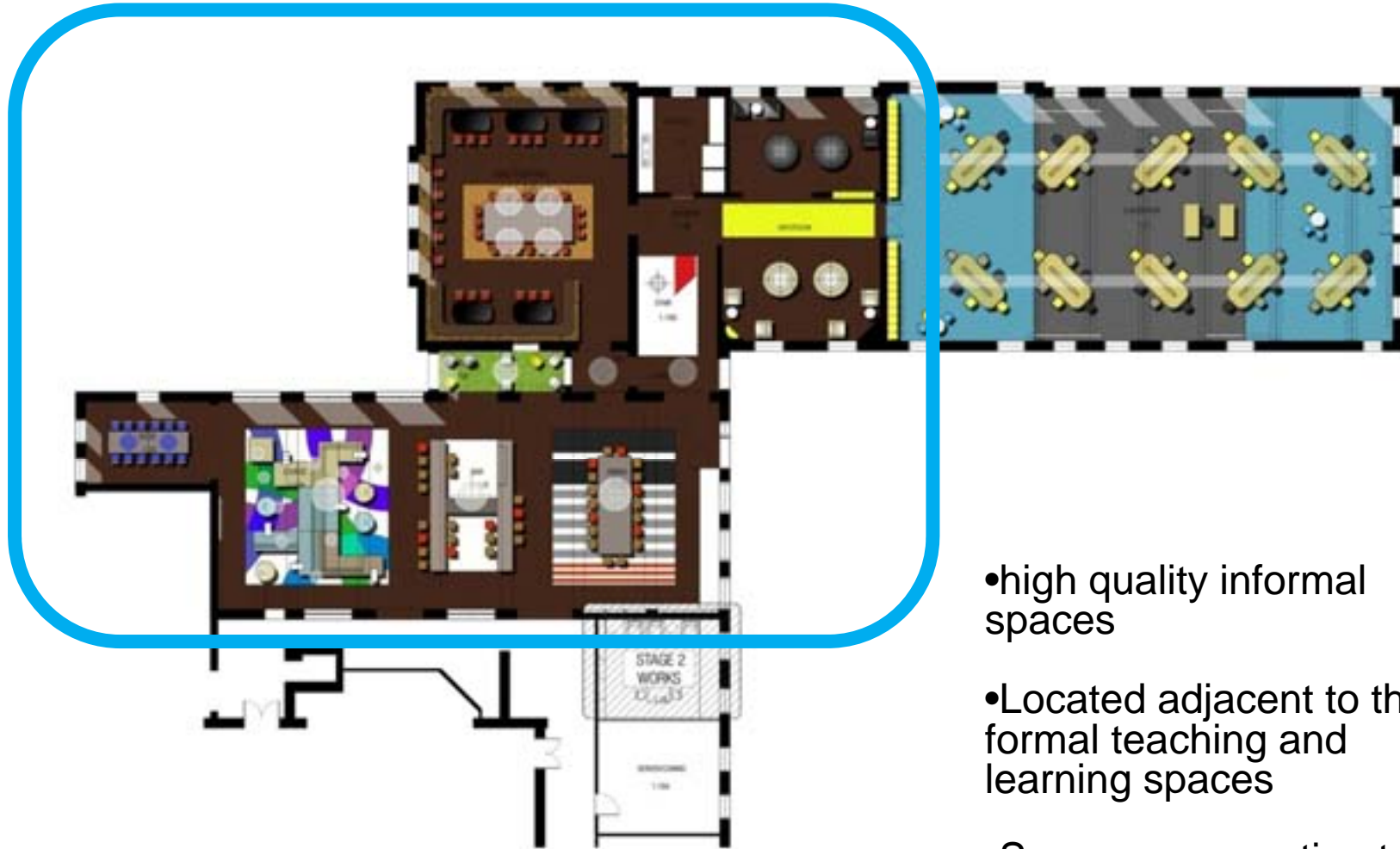


How do these spaces best fit on campus?



Encourage the learning  
conversation to  
continue.....

# Informal learning spaces

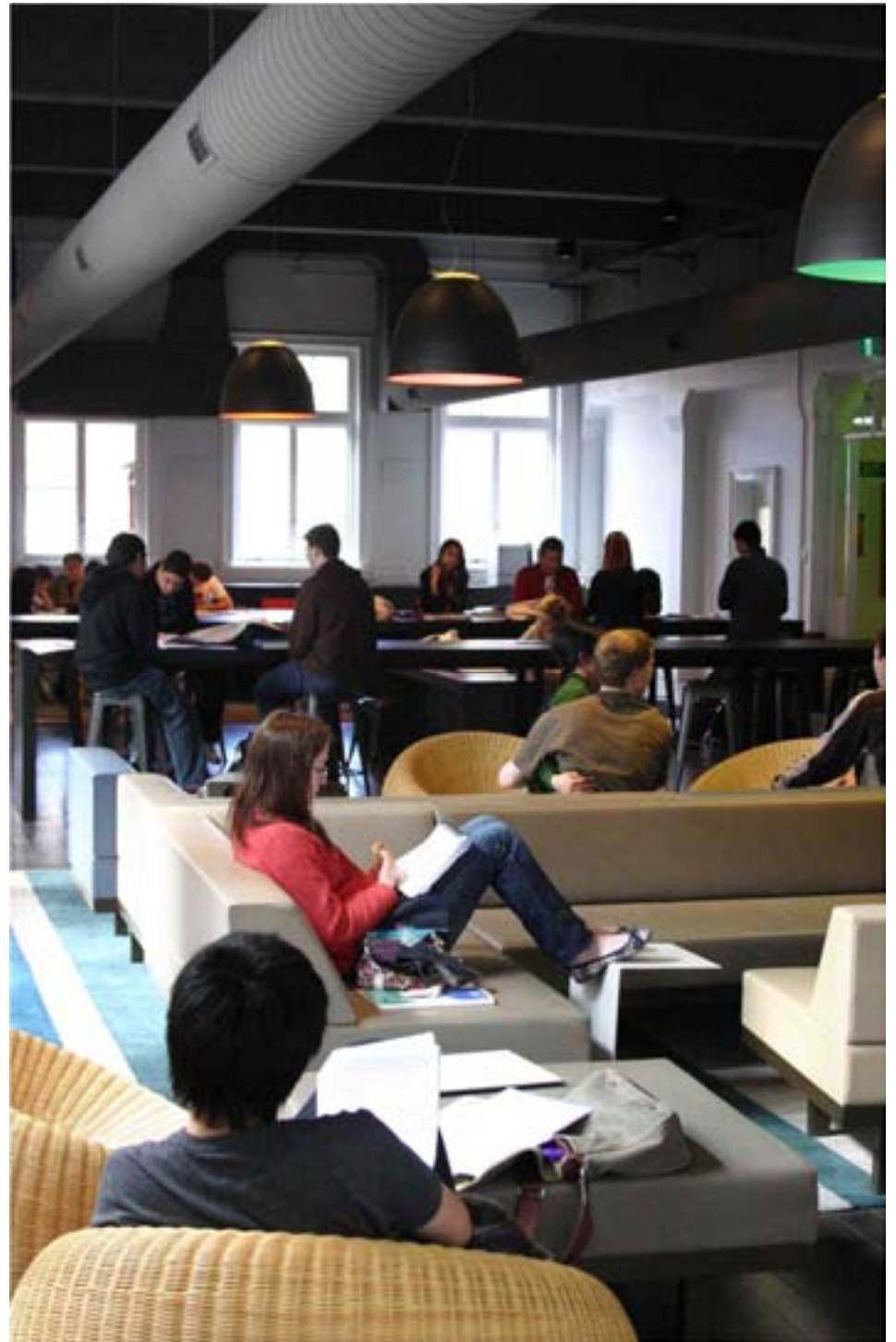


- high quality informal spaces
- Located adjacent to the formal teaching and learning spaces
- Spaces are non timetabled







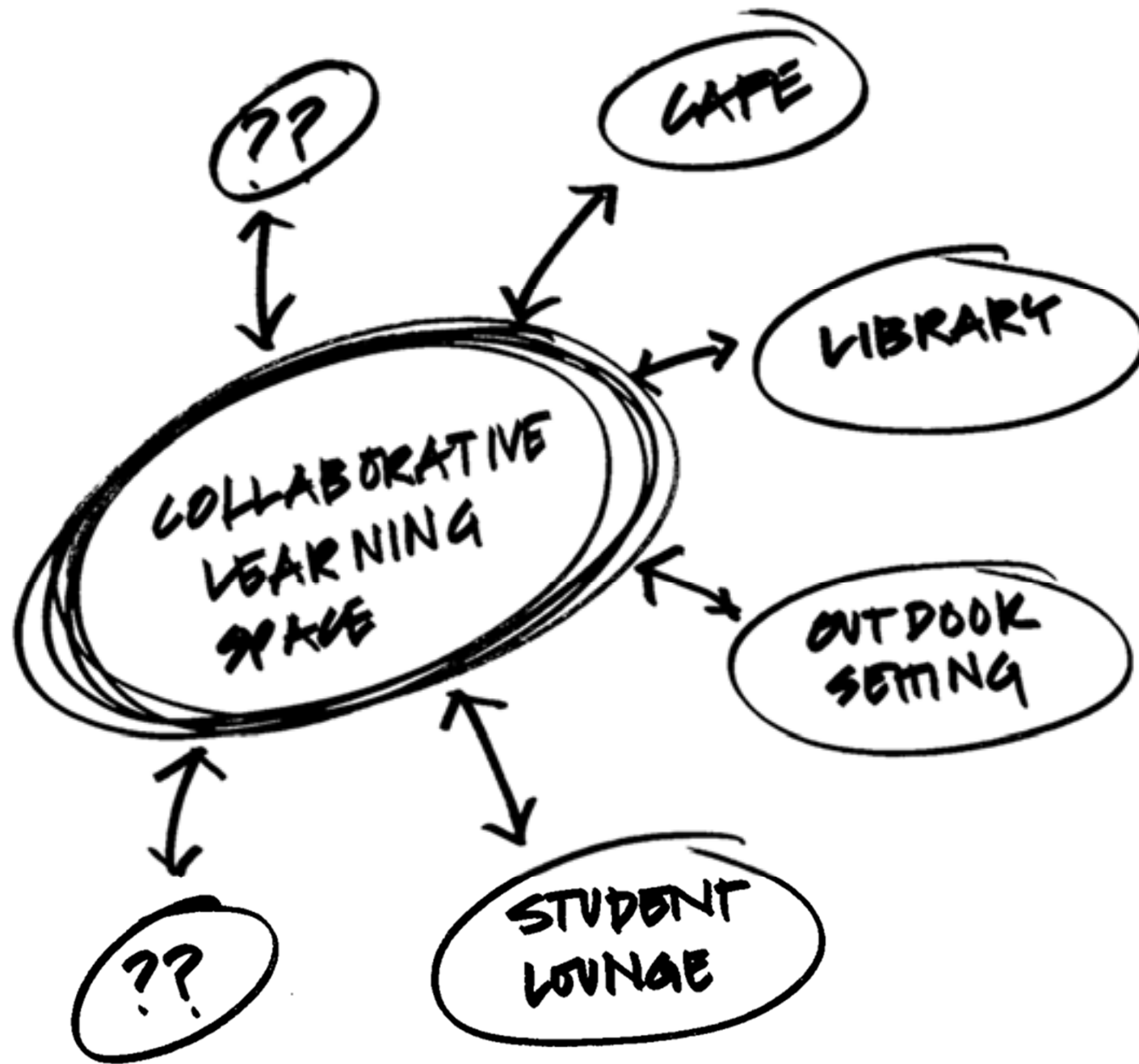














Collaborative teaching and learning spaces are a valid typology

Collaborative teaching and learning spaces are a valid typology

Invest time in defining the education vision

Collaborative teaching and learning spaces are a valid typology

Invest time in defining the education vision

Plan the location strategically to optimise impact

Thank you  
Questions?

**WOODS  
BAGOT™**

