



TEFMA International Panel

Mark Swindlehurst
Director of Facilities - Lancaster University

Deputy Chairman - Association of University Directors of Estates
(AUDE)

August 2011

Lancaster University

AUDE

Current Main Issues in UK Higher Education



TEFMA International Panel



Lancaster University

Location : North West England





Infrastructure Masterplan



Lancaster University
Infrastructure Masterplan 2007-2017

- Energy Policy Statement
- Electrical Infrastructure
- Heating Infrastructure
- Water & Gas Infrastructure
- Fire Alarm Infrastructure
- Underground Service Duct
- Highways & Drainage
- Energy Efficiency
- Sustainable Energy Proposals
- Cost Plan
- Project Plan
- Activity Plan



LANGASTER UNIVERSITY

Carbon Management Plan
2009 – 2012

A plan for reducing greenhouse gas emissions
and energy consumption

CARBON TRUST STANDARD
REDUCING CO2
YEAR ON YEAR

Student Residences

STUDENT RESIDENTIAL PROJECTS - Lancaster University

Lancaster University	BREEAM: Bespoke EcoHomes 2006	Excellent rating	Certified by BRE in 2008
Lancaster University	2008 UK BREEAM Award	Multi- Residential Category 2008 – Excellent rating	Awarded by BRE in 2008
Lancaster University	North West Regional Construction Awards, Environmental Sustainability Category	Winner in the Environmental Sustainability Category for 2009	Awarded by the Centre for Construction Innovation, an enterprise centre at the University of Salford's School of the Built Environment
Lancaster University	International Green Apple Award for the Built Environment	Winner 2009	Awarded by the Green Organisation, an independent, non-political, group dedicated to promoting environmental best practice around the world
Lancaster University	Green Green Award	Winner 2009	
Lancaster University	The Chartered Institution of Building Services Engineers (CIBSE) North West Region Annual Awards	Winner of the Environmental Design Category for 2009	Awarded by CIBSE in 2009
Lancaster University	Secured by Design		Certified by Lancashire Constabulary in 2008





2008 BREEAM AWARDS

The certificate is presented to:

breeam LANCASTER UNIVERSITY - PHASE IV RESIDENTIAL

Winner of the 2008 BREEAM Award Category: MULTI-RESIDENTIAL



Version: 2008
 Location: 100% 100%
 Certified Green Practice

Lancaster University - Phase IV Residential achieved a score of 71.26

BREEAM (Building Research Establishment Environmental Assessment Method) is the world's leading environmental assessment. It sets the standard for best practice in sustainable design and has become the de facto measure of a building's environmental performance.




STUDENT RESIDENTIAL PROJECT AWARDS - Lancaster University



bd THE BUILDING DESIGNER

Searching for building products?

Top marks for university eco-residences

By Jane Jones

Lancaster University made the partnership with a private sector developer and the award of a private sector award of 'Best Eco-Residence' for its new student accommodation. The building is a prime example of sustainable design and has achieved a BREEAM Excellent rating.

The building is a prime example of sustainable design and has achieved a BREEAM Excellent rating.

The building is a prime example of sustainable design and has achieved a BREEAM Excellent rating.



The design of these new student residences involves the use of sustainable materials and processes. The building is a prime example of sustainable design and has achieved a BREEAM Excellent rating.

The building is a prime example of sustainable design and has achieved a BREEAM Excellent rating.

The building is a prime example of sustainable design and has achieved a BREEAM Excellent rating.



Table with columns: Product Name, Price, and other details.



Interior view of a student room, showing a desk, chair, and bookshelves.



STUDENT RESIDENTIAL PROJECT - Lancaster University; media publication



Student Residences - Phase 4

BREEAM Excellent - National Award Multi Residential
CIBSE North West Annual Award Winner
Green Gown Award
Secured by Design Award



Green Lancaster – Buildings in use



- Students taking the lead.
- The Carbon Competition is a project running across certain campus residences to monitor their utility usage.
- The competition aims to encourage students to be more conscious of their utility usage and make steps to reduce their impact on the environment.



- BREEM 'Outstanding' award
- Design and Post Occupancy
- The first Education building to achieve 'Outstanding' in the UK



The Future
Wind Turbine





Association of University Directors of Estates



- AUDE (in original guise) was formed in 1960
- Represents 155 Member Institutions including all UK Universities
- Each member is represented by the most senior member of staff responsible for estates and facilities
- Nine regional AUDE groups in the UK





STRATEGIC OBJECTIVES

- To promote excellence in the strategic planning, development, management and operation of the higher education estate and facilities.
- To maintain and enhance professional competence and ethical standards.
- To facilitate the pursuit of quality, efficiency and effectiveness.
- To optimise solutions to common concerns by disseminating the expertise, experience and knowledge of members for mutual benefit.
- To provide opportunities for development and training.
- To provide forums for discussion, consultation and exchange.
- To promote and take forward projects and research of benefit to members.
- To influence opinion formers and decision-makers.
- To consider and advise on matters referred by Universities UK, the Higher Education Funding Councils and external bodies and individuals.
- To consult with professional institutions and work in partnership with related organisations regionally, nationally and internationally.
- To promote the reputation and activities of the Association and its members.

Current Main Issues in UK Higher Education

(relating to Facilities & Estates)



- A picture speaks a thousand words.....

What are the main issues facing UK Universities?

Understand the politics, the current market and future market

Every University going through Efficiency savings

Capital funding reduced by circa 75%

Fee change from 2012 : most Universities will charge the maximum fee. (£9k pa)

Student numbers will be governed by the size of the “loan book”



Key Issues for Facilities and the Estate

Student experience (& expectation)

Step change in funding of HE

Shared services

Outsourcing 'Back Office'

Carbon 'tax' equal to 7% of energy cost

Carbon reduction programs



Pressure to deliver – need to demonstrate Performance

Be highly aware of the student issues. Student perception and influence will drive business

Reduce negative impact on the "customers"

Use and report against SLA's and ensure they are meaningful

Operate more contractually?

Business/external peer evaluation

Reduce costs



Resources

People

- No recognised feeder systems for facilities professionals
- Lack of commitment to training
- Reduction in confidence as a career



KPI's and Comparative data

Energy data (must be read alongside design, location, model of the estate and activity)

Space data (must be read in conjunction with design, activity and utilisation data)

Warning notes or qualifications tend to be absent.

What are the international comparators?

How can we best share this information?



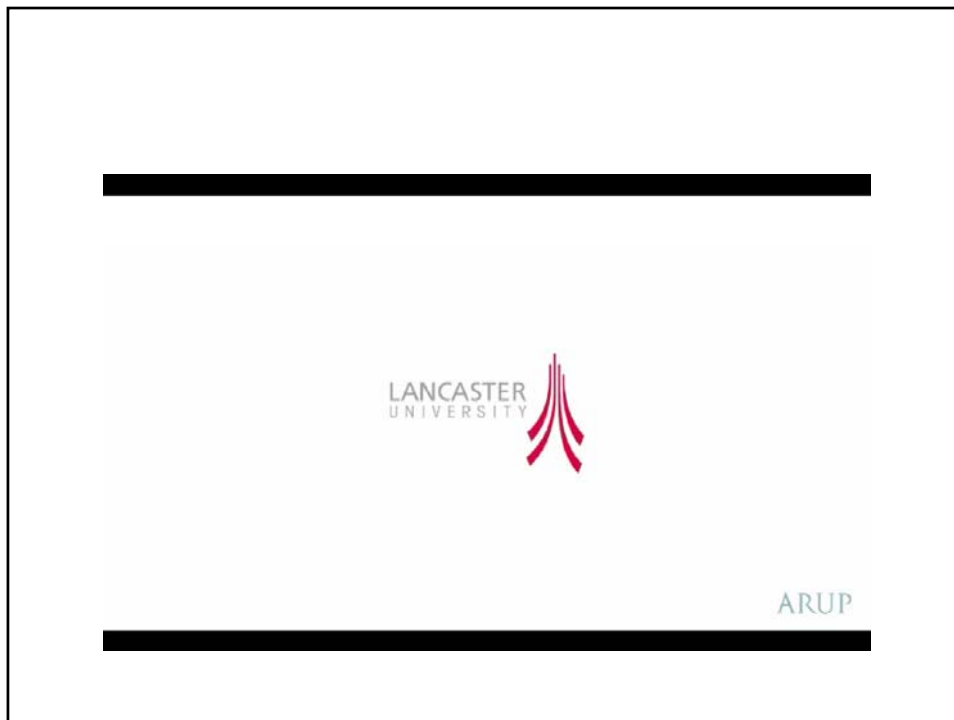
What should we do next?

- Be at the centre of decision making
- Have and share a strategic view on issues – institutionally, nationally & internationally
- Remember and remind people about the impact of facilities and the estate (commercial impact - student recruitment)
- Embrace the web and social media. It means instant sharing – the good, the bad and the ugly ! Recognise and embrace this media. Use it positively.



- What your students, staff and visitors say matters – listen more intently than ever
- Be transparent
- Be able to demonstrate your performance – know the numbers and statistics
Measure it and report





Questions?



www.aude.ac.uk



www.lancaster.ac.uk/facilities