

# Creating space without building – new ways of surmounting old obstacles

Barbara Robinson  
Space Manager  
University of Queensland


# SCUP

## Society for College and University Planners

http://www.scup.org/page/resources

Suggested Sites ▾ Google Web Slice Gallery ▾

Resources

**Society for College and University Planning**  
INTEGRATED PLANNING FOR HIGHER EDUCATION

About ▾ Membership

[Home](#) ▸ SCUP Resources

**RESOURCES**

- ▾ Books
- ▾ Booklets
- Campus Facilities Inventory (CFI)

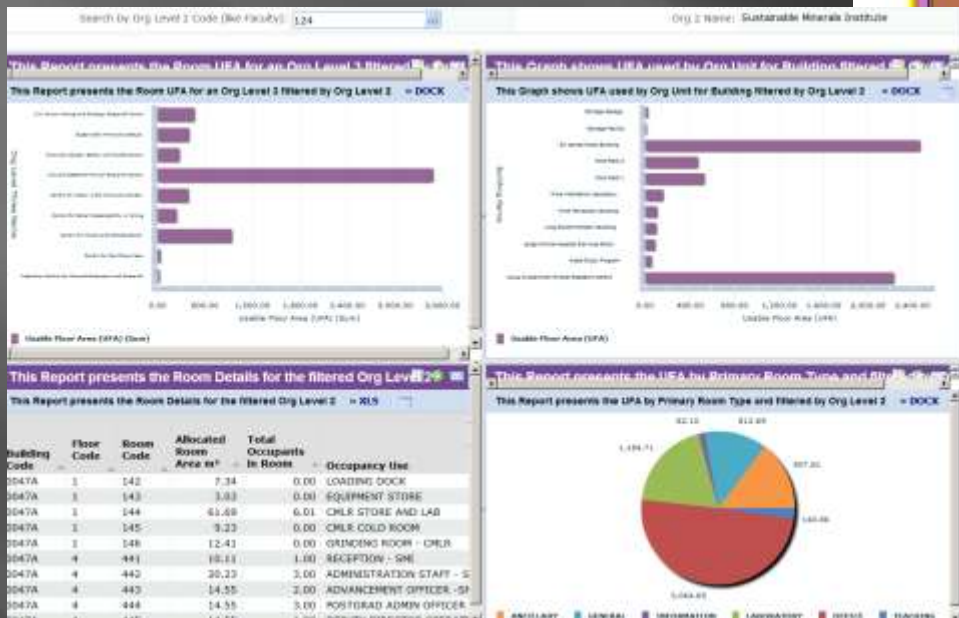
**SCUP Resources**

**FEATURED PUBLICATIONS**



# Trends in Space Management

## □ Use graphics





# Trends in Space Management

- ▣ Use graphics
- ▣ Integrate info

# Trends in Space Management

- ▣ Use graphics
- ▣ Integrate information
- ▣ Audits and Analytics

# Trends in Space Management

- ▣ Use graphics
- ▣ Integrate info
- ▣ Audits and Analytics
- ▣ Move off campus

# Trends in Space Management

- ▣ Use graphics
- ▣ Integrate info
- ▣ Audits and Analytics
- ▣ Move off campus
- ▣ Benchmark

# Trends in Space Management

- ▣ Use graphics
- ▣ Integrate info
- ▣ Audits and Analytics
- ▣ Move off campus
- ▣ Benchmark
- ▣ Maintain flexibility



Michie building



# Trends in Space Management

- ▣ Use graphics
- ▣ Integrate info
- ▣ Audits and Analytics
- ▣ Move off campus
- ▣ Benchmark
- ▣ Maintain flexibility
- ▣ Work with stakeholders

**“Make Space planning  
Everyone's responsibility”**



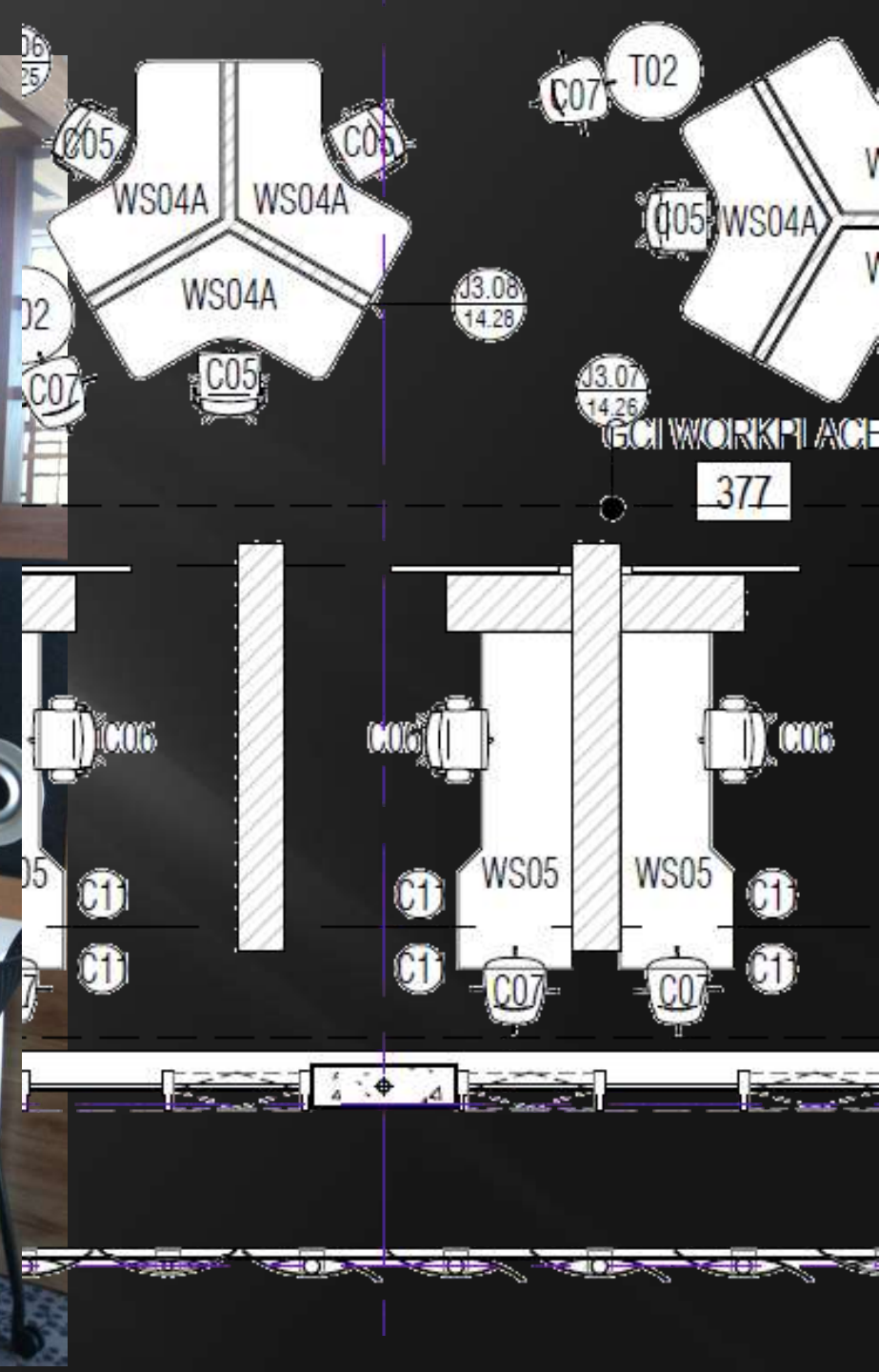


# Start at the top





# Small Space adjustments





Space Planning & Management

Space Inventory & Performance

Processes or Roles:

UQ Space Reports

UQ Additional Space Reports

UQ Space Editors No restriction

UQ Space Manager

UQ Space Administrators

UQ Sp Admin Additional Reports

UQ User Access Admin

UQ Space Cleaning

UQ Space Editor

UQ Multimedia Device Edit Function

UQ Space Editor Location

UQ Multimedia Device Edit Function

UQ Log of Changes

UQ Sustainability

UQ TEFMA

Web Central - Windows Internet Explorer

https://archibus.uq.edu.au

Favorites Suggest

Web Central



Room UFA and Area by Org Level

This Report presents the Room UFA

This Report presents the Room UFA

This Report presents the Room UFA

This Report presents the Room UFA

This Report presents the Room UFA

This Report presents the Room UFA

This Report presents the Room UFA

This Report presents the Room UFA

This Report presents the Room UFA

This Report presents the Room UFA

This Report presents the Room UFA

This Report presents the Room UFA

This Report presents the Room UFA

This Report presents the Room UFA

This Report presents the Room UFA

This Report presents the Room UFA

This Report presents the Room UFA

This Report presents the Room UFA

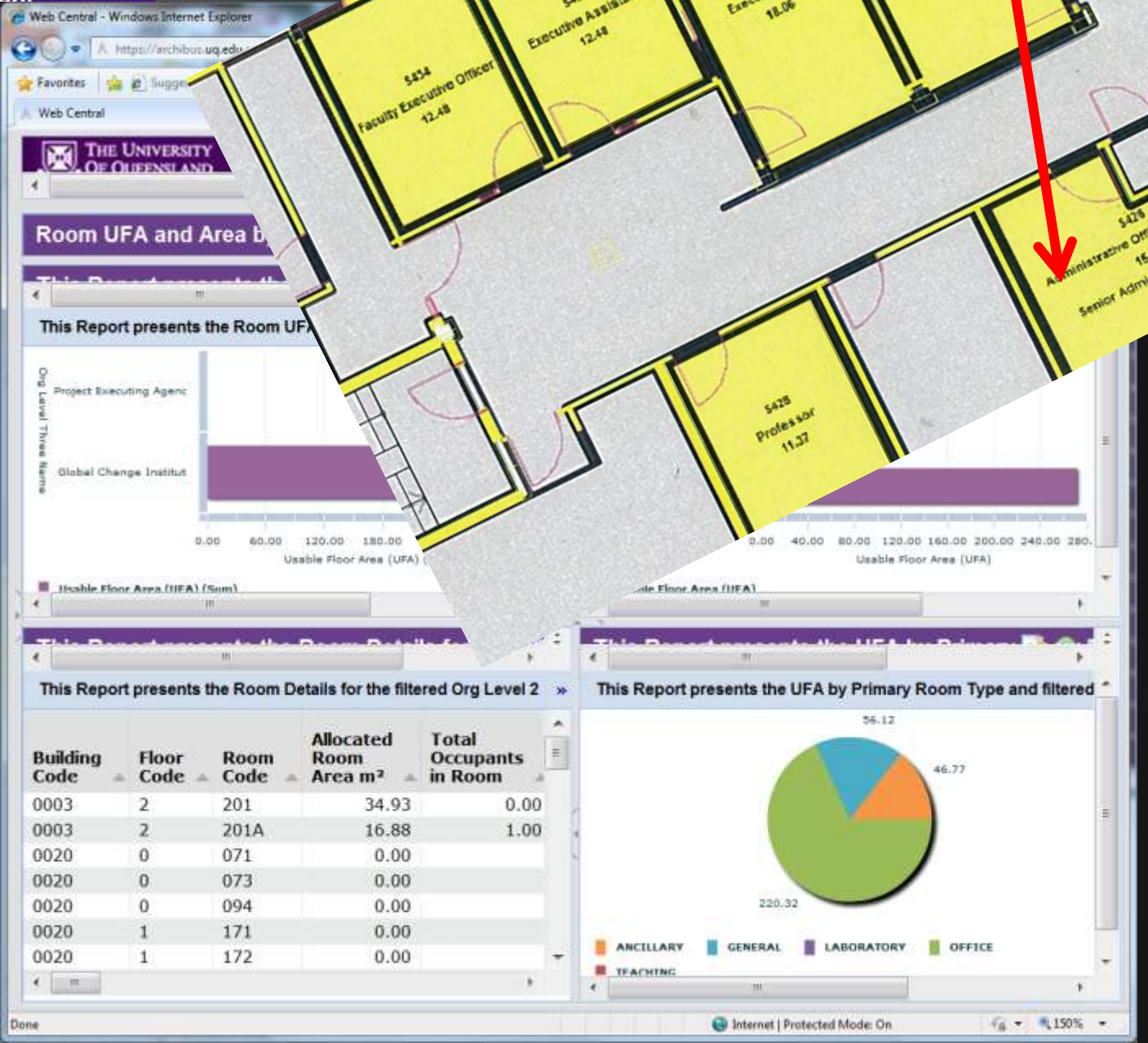
This Report presents the Room UFA

This Report presents the Room UFA

This Report presents the Room UFA

This Report presents the Room UFA

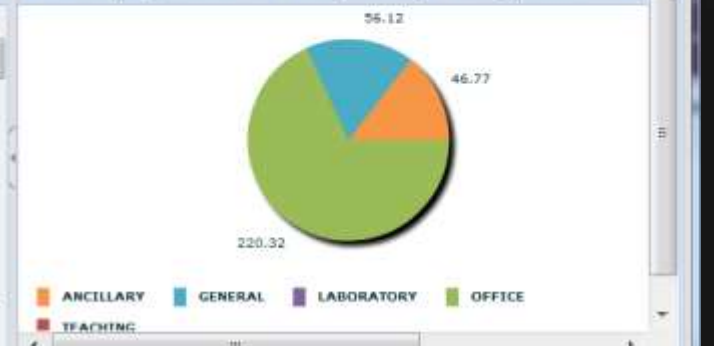
This Report presents the Room UFA



This Report presents the Room Details for the filtered Org Level 2

| Building Code | Floor Code | Room Code | Allocated Room Area m² | Total Occupants in Room |
|---------------|------------|-----------|------------------------|-------------------------|
| 0003          | 2          | 201       | 34.93                  | 0.00                    |
| 0003          | 2          | 201A      | 16.88                  | 1.00                    |
| 0020          | 0          | 071       | 0.00                   |                         |
| 0020          | 0          | 073       | 0.00                   |                         |
| 0020          | 0          | 094       | 0.00                   |                         |
| 0020          | 1          | 171       | 0.00                   |                         |
| 0020          | 1          | 172       | 0.00                   |                         |

This Report presents the UFA by Primary Room Type and filtered



Done

Internet | Protected Mode: On

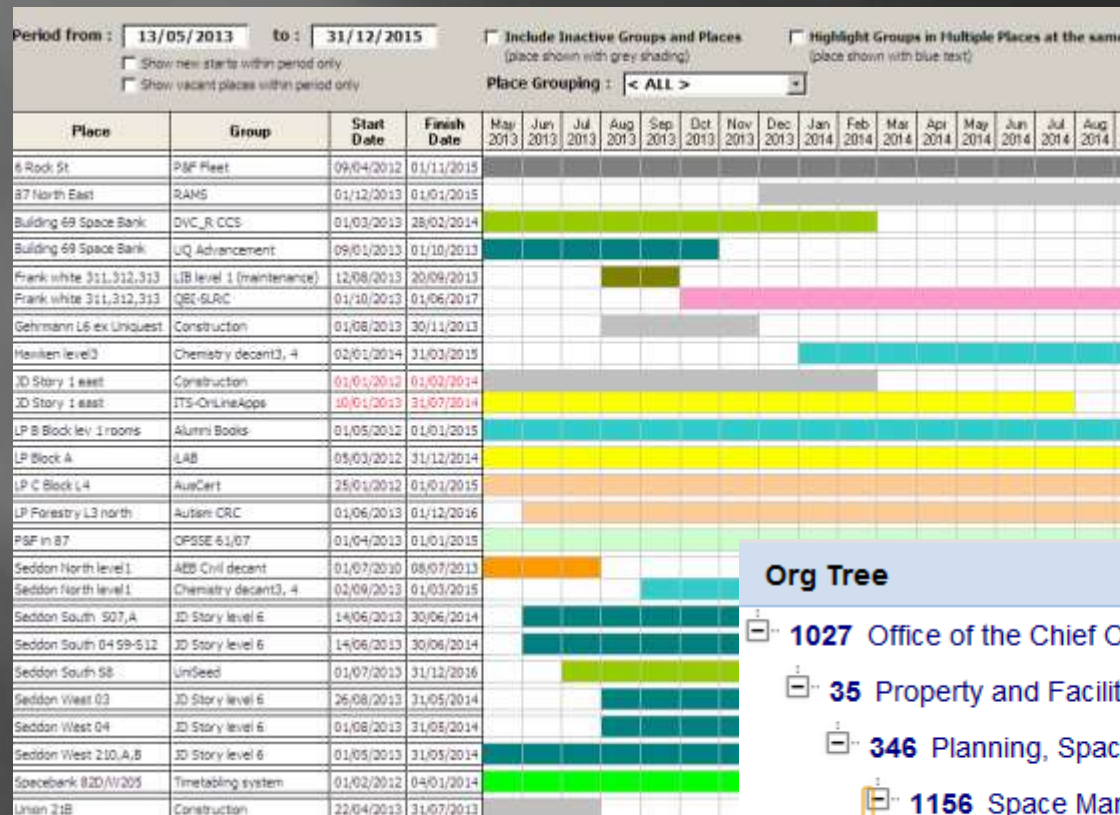
150%



# Space system

- ▣ Accurate floor plans
- ▣ Accurate database of all location, occupant and use details
- ▣ Record of allocations given, conditions and time periods
- ▣ Data Hub, to link different data sets

# Space system



## Org Tree

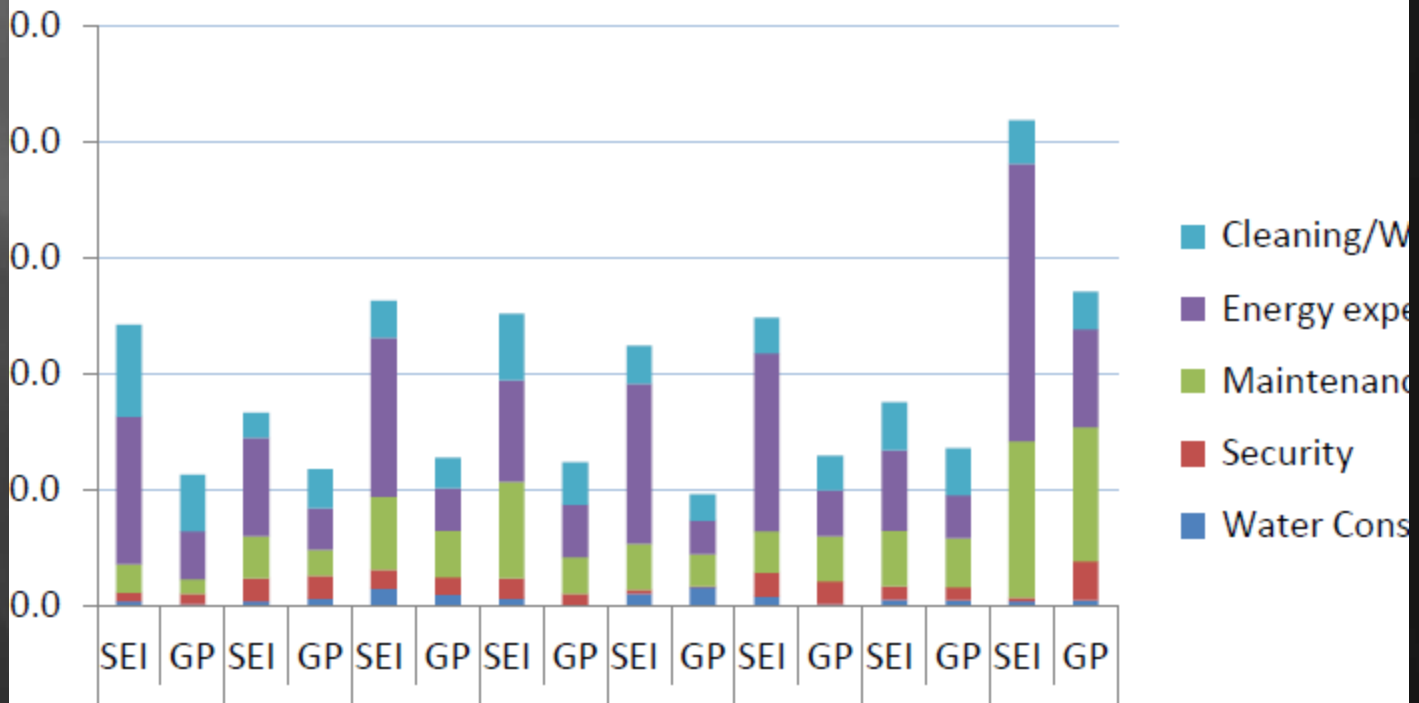
- 1027 Office of the Chief Operating Officer
  - 35 Property and Facilities Division
    - 346 Planning, Space and Property (Property and Facilities)
      - 1156 Space Management
        - 1156 Space Management

Standards

S

Go8 UNIVERSITIES - SPACE MANAGEMENT  
DATA DICTIONARY

- Standards
- S
- Go8 UNIVERSITIES - SPACE MANAGEMENT  
DATA DICTIONARY



# Standards

## ▣ Space standards



**SPACE PLANNING GUIDELINES**  
Edition 3



### 2.1. TYPES OF SPACE

The other broad parameters which are useful relate to types of space on campus and the breakdown of academic space against faculties or discipline groupings.

Typically a University or Higher Education Institution is made up of the following Groupings:

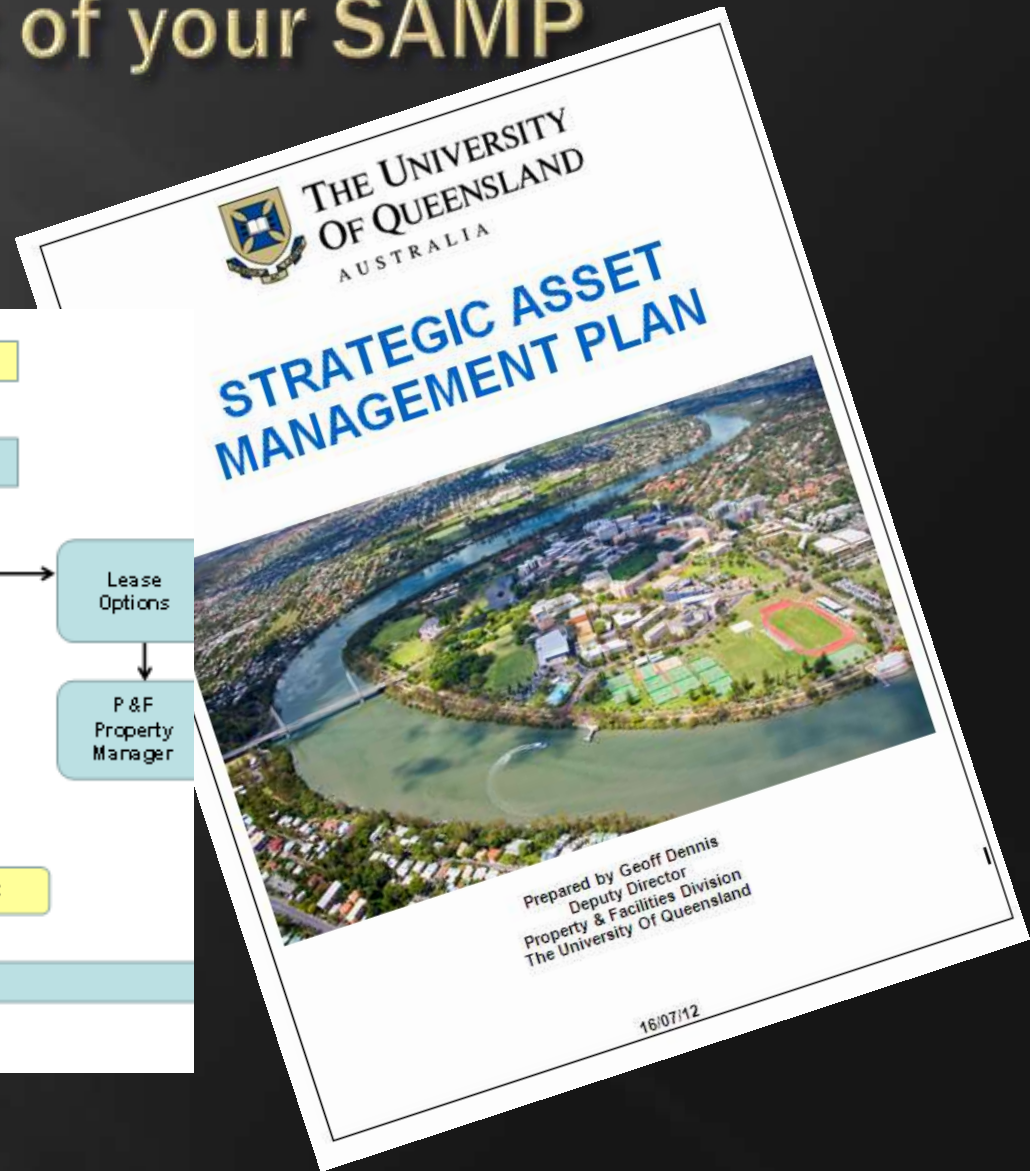
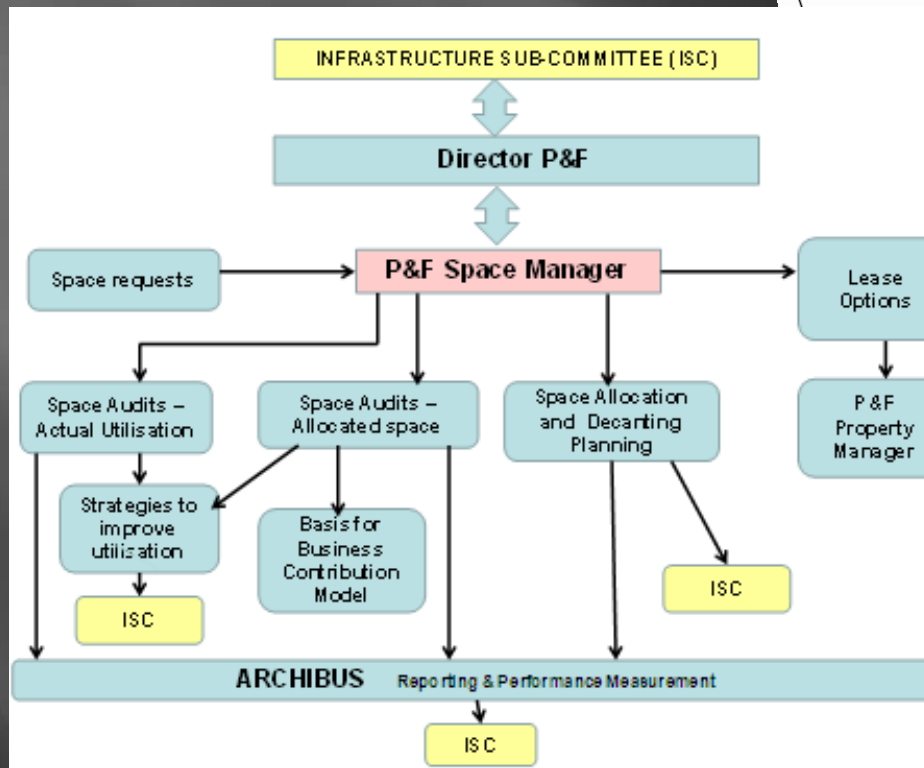
- Academic space (including dedicated teaching and research space, Academic and General Support Offices).
- Central Administrative support space.
- Centrally timetabled teaching space (Lecture Theatres, Seminar and Tutorial rooms).
- Library Space Including Study Centre and Computerised Student Work Spaces, Info Commons, etc.

#### 2.1.1 - TYPES OF SPACE % ACROSS CAMPUS

| Type of Group Space<br>2008 – 2009 Data<br>(Ref 4)   | % of total space on Campus         | m <sup>2</sup> UFA /Total Campus EFTSL   |
|--|------------------------------------|--|
| Academic,<br>Includes Teaching, Research, Acad Offices and Acad General Support Offices, Dedicated Teaching Rooms and Laboratories | 42% - 66%<br>An average of 46.8%   | 2.1 - 9.5m <sup>2</sup> UFA / EFTSL<br>An average of 5.2m <sup>2</sup> UFA / EFTSL |
| Central Administrative Support Services  | 6.7% - 16%<br>An average of 11.97% | .6 - 1.5m <sup>2</sup> UFA / EFTSL<br>An average of 1.12m <sup>2</sup> UFA / EFTSL |
| Centrally timetabled teaching space, Lecture Theatres, Seminar and Tutorial Rooms etc  | 3.2% - 16%<br>An average of 9.4%   | .5 - 2.02m <sup>2</sup> UFA / EFTSL<br>An average of .93m <sup>2</sup> UFA / EFTSL |
| Library Space<br>Includes Study Centre and Computerised Student Work   | 3.6% - 16%<br>An average of 8.5%   | .4 - 1.64m <sup>2</sup> UFA / EFTSL<br>An average of .81m <sup>2</sup>             |



# An Action Plan that is part of your SAMP





# Teaching room Audit



- ▣ Counting methods
- ▣ Cameras
- ▣ School responses
- ▣ Analysis



Please be aware that Properties and Facilities will be monitoring this lecture theatre from 21-03-13 to 28-03-13 to count the occupants in this room for the 2013 Space Utilisation Audit. We require this information for Space Management purposes.

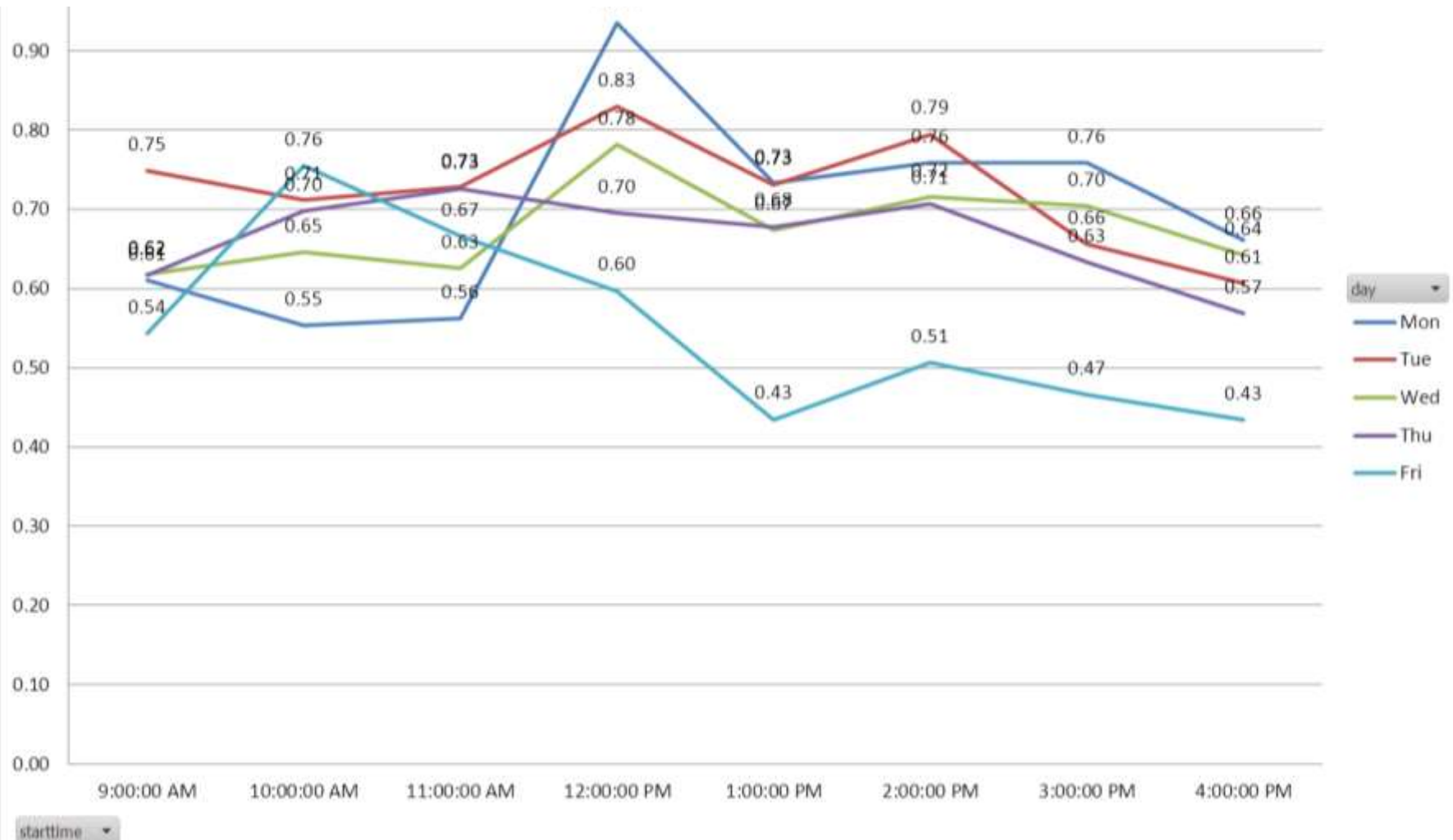
The Lectopia images will only be viewed by P&F staff members and supervised by a full time staff member no images will be kept.

We will be conducting this operation in accordance with the 2009 Privacy Information Act.

We apologise for any inconveniences this may cause.

# What % of the class turn up across the week?

Total head count in all booked rooms/  
Total seats booked in all booked rooms



# Audits

## What were the benefits?

- ▣ Identified rooms (~700sqm) to decommission
- ▣ Instigated changes to policies
- ▣ Identified school rooms to share
- ▣ Identified particular problems
- ▣ Understand the mix of rooms required
- ▣ Have good data for future trend analysis
- ▣ Make the utilisation data part of Archibus so its very visible

# Traditional views on space

Groups think that they:

- ▣ Own space
- ▣ Can loan space
- ▣ Limited use is OK
- ▣ Short term automatically becomes ongoing
- ▣ New space adds to the existing





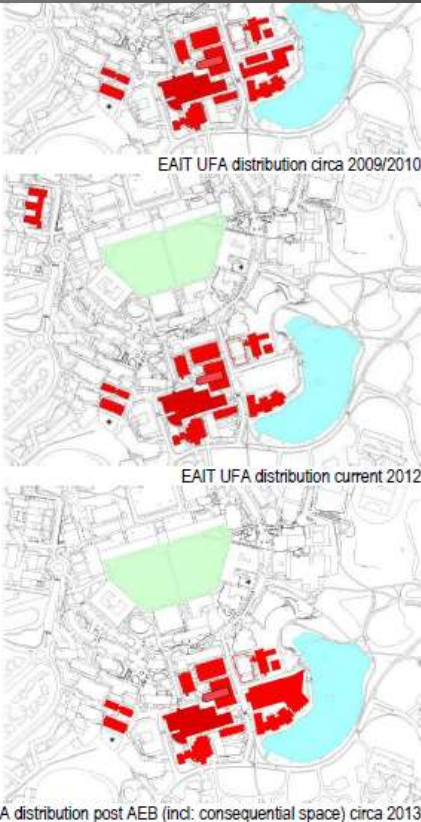
# Finding the facts

- How much was new ?



# Finding the facts

- ▣ What was decant space ?
- ▣ Comparisons with the other faculties

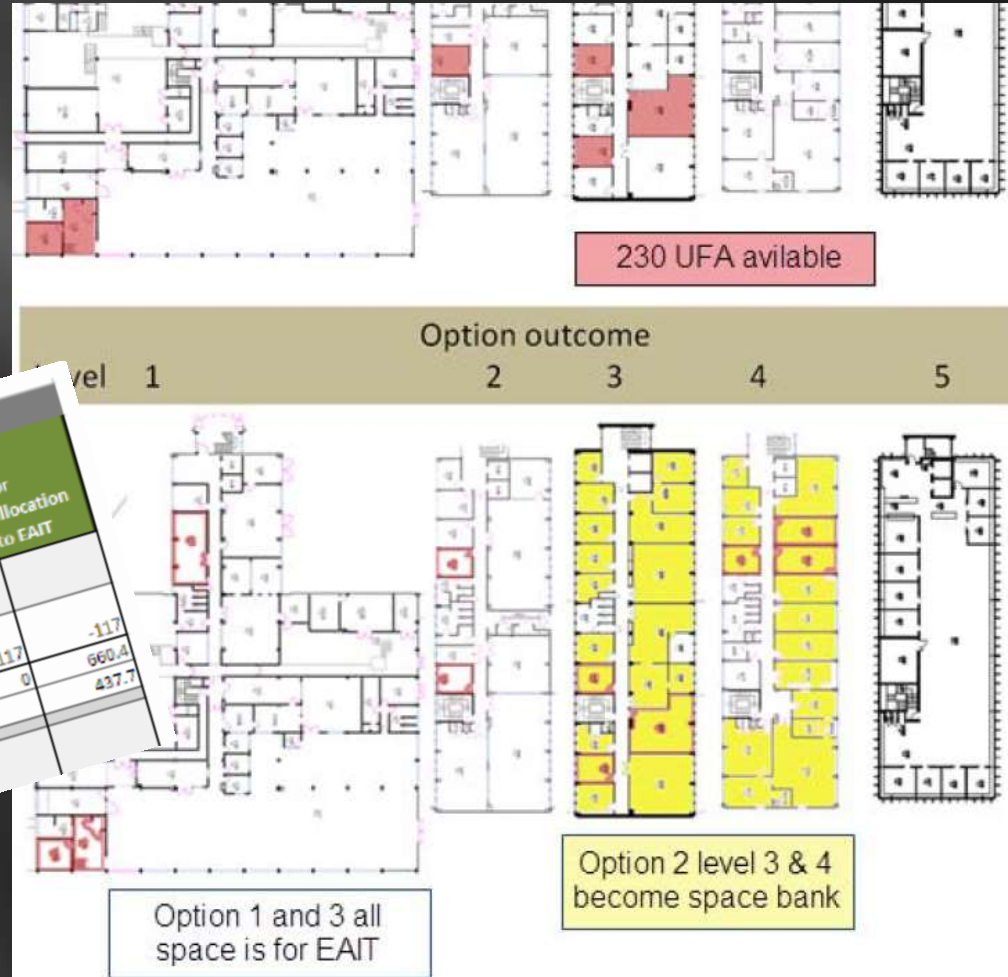




# Resolution

- Four options were developed

| Option 2                    |                                      |  |  |                          |                        |
|-----------------------------|--------------------------------------|--|--|--------------------------|------------------------|
| Building level              | Comment                              | Other space included in this option - Negative if m <sup>2</sup> are from EAIT | Available AEB Consequential Space m <sup>2</sup> | For allocation to others | For allocation to EAIT |
| Hawken Engineering Building |                                      |  |  |                          |                        |
| Level 2                     | Swop EAIT 50/5202 for Central 51/207 |  |  |                          |                        |
| Level 3                     | For EAIT                             |  |  |                          |                        |
| Level 4                     | For EAIT                             |  |  |                          |                        |
| Mansergh Shaw Building      |                                      |  |  |                          |                        |
|                             |                                      | -117   | 660.4  | 117                      | -117                   |
|                             |                                      |  | 437.7  | 0                        | 660.4                  |
|                             |                                      |  |  |                          | 437.7                  |



# Summary – creating space without building

- ▣ Moving some groups/functions out of spaces
- ▣ Change the usage patterns
- ▣ Charge for space
- ▣ Education about our carbon footprint

# Summary – creating space with minimal building

- ▣ Improve undesirable spaces



Before

After



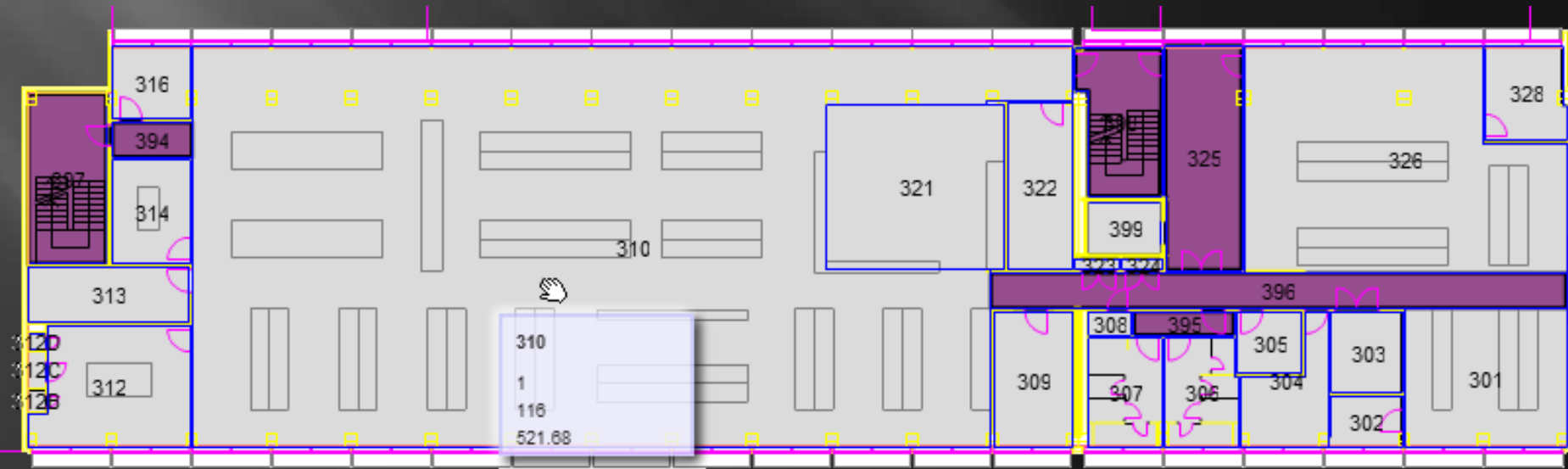
# Summary – creating space with minimal building

- ▣ Improve undesirable spaces
- ▣ Reconfigure space to be multipurpose



# Summary – creating space with minimal building

- ▣ Improve undesirable spaces
- ▣ Reconfigure space to be multipurpose
- ▣ Reconfigure space so as to reduce circulation and non-productive space



# The way to get agreement is by:

- ▣ Having the whole range of spatial facts
- ▣ Making comparisons across groups
- ▣ Having an open and transparent process
- ▣ Working with stakeholders to find solutions
- ▣ Having good built examples to demonstrate

You need support from the top and some swing space to make it happen.

# Questions