

Standing up to government

Moving towards higher education policy that works

John Pike
Executive Officer, Policy Planning
and Government Relations





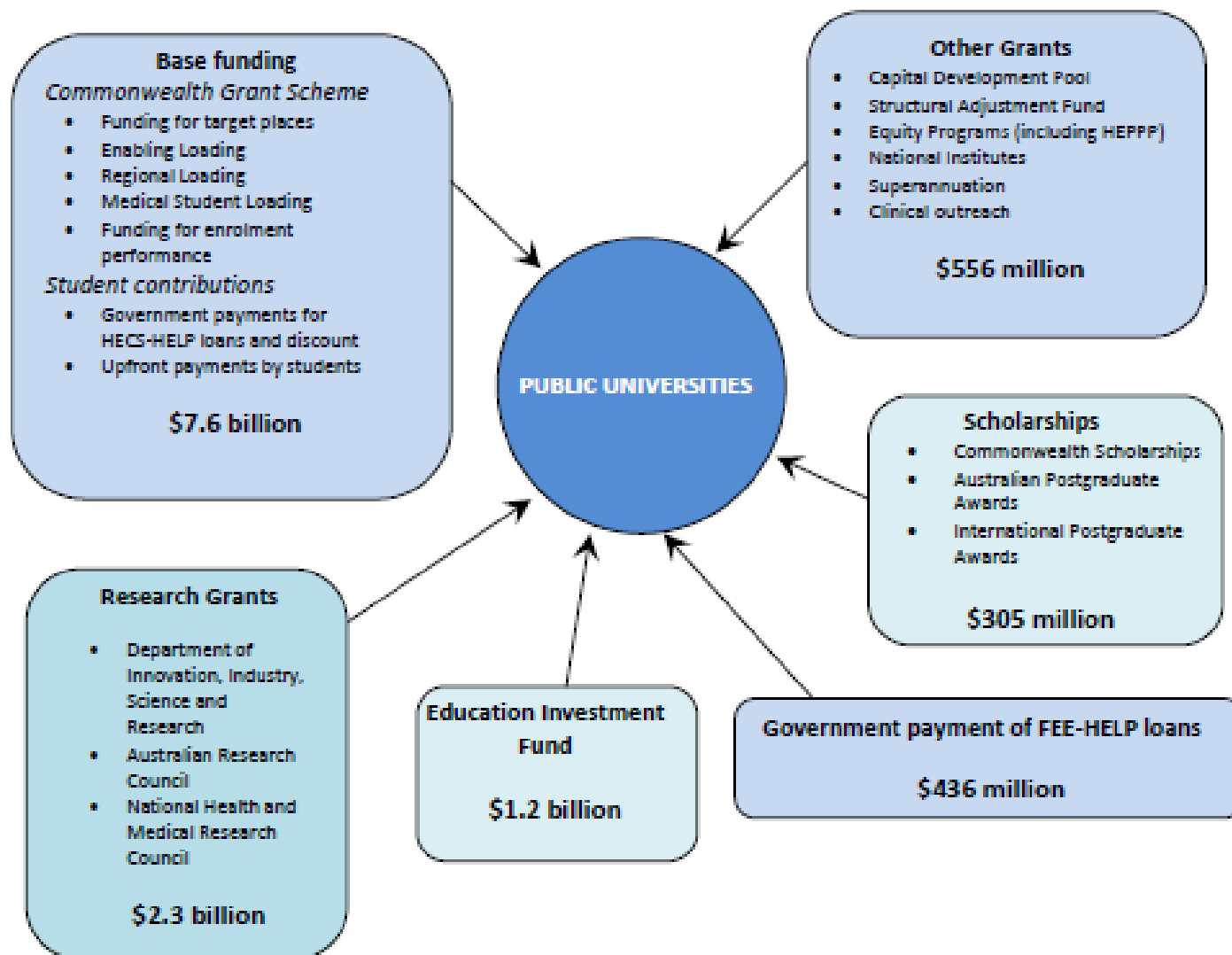
Murdoch
UNIVERSITY



Commonwealth Funding



Murdoch
UNIVERSITY



Funding Schemes - 2010



Murdoch
UNIVERSITY

Commonwealth Grant Scheme

CGS - Cluster funding

Enabling Loading

Regional Loading

Medical Student Loading

Transitional Loading (maths, science)

Capital Development Pool (CDP)

Diversity and Structural Adjustment Fund

Clinical Outreach – JCU Dental School

Indigenous HE Advisory Council

Indigenous Support Program

Indigenous C'wlth Accommodation Schols

Indigenous C'wlth Education Costs Schols

Indigenous Access Scholarships

Indigenous Staff Scholarships

Tertiary Education Quality & Standards Agency

Australian Learning and Teaching Council

Australian University Quality Agency

Graduate Careers Council

Graduate Skills Assessment

Open Learning Initiative

HE Participation & Partnership Prog (HEPPP)

Higher Education Disability Support Program

Superannuation Grants

Workplace Productivity Program

Transitional Costs Program

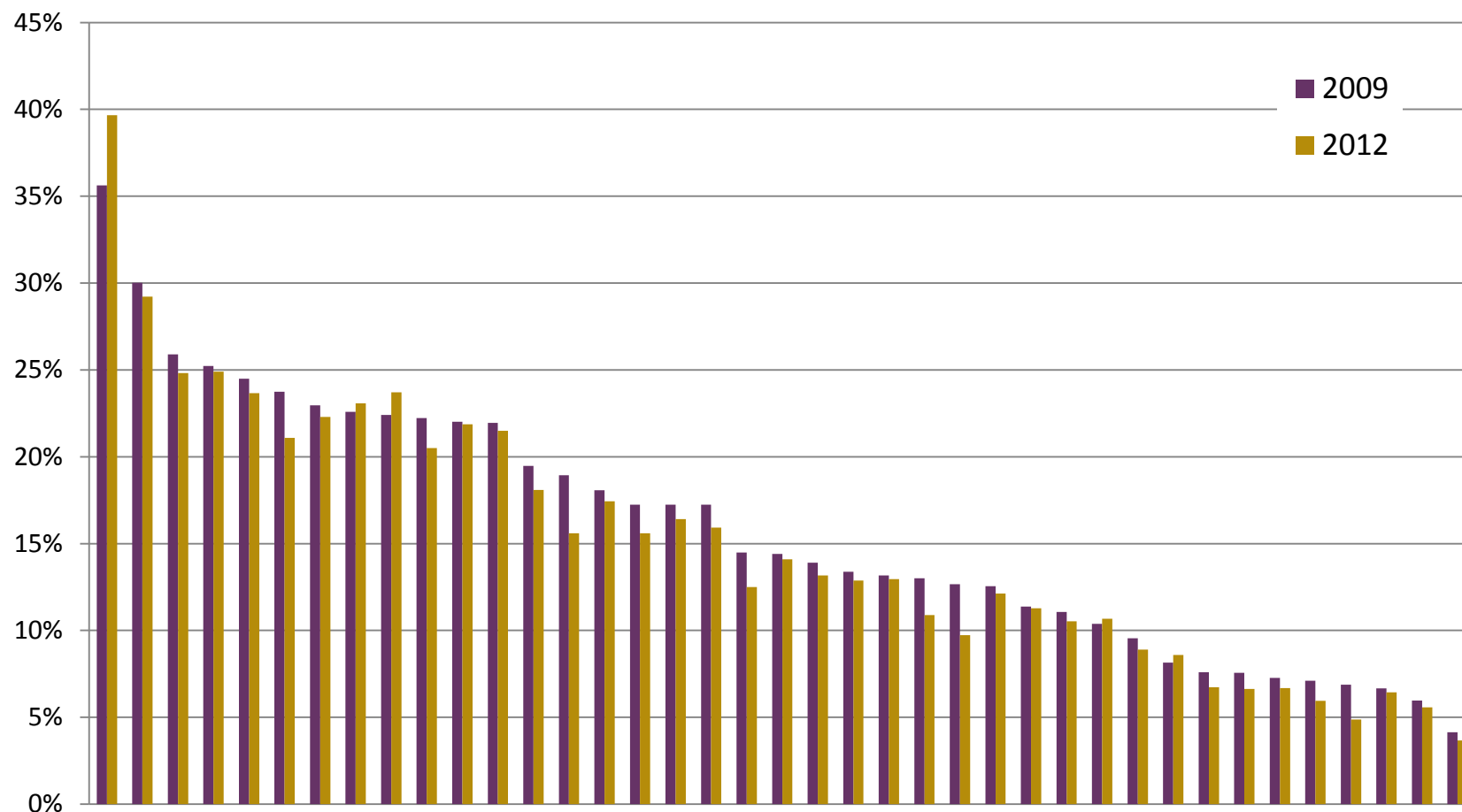
National Institutes

Education Investment Fund

Higher Education Special Projects



Low SES Load

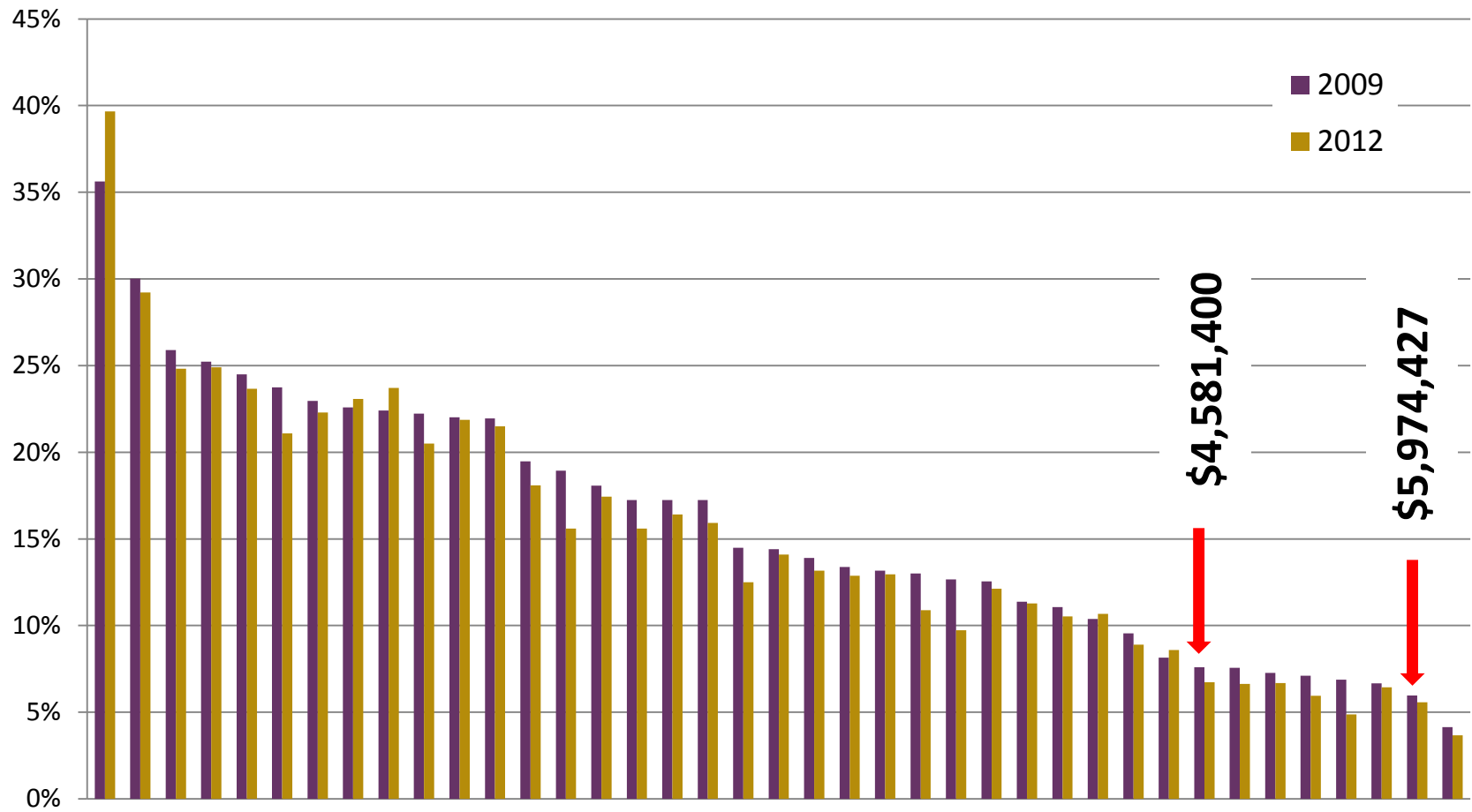


Low SES based on census Collection District, with the SES value derived from the 2006 SEIFA Education and Occupation Index

Low SES Load



Murdoch
UNIVERSITY



Low SES based on census Collection District, with the SES value derived from the 2006 SEIFA Education and Occupation Index

Proposed NHMRC cuts



Murdoch
UNIVERSITY



TEQSA - Higher Education Standards Framework



- Provider Standards
 - Provider Registration Standards
 - Provider Category Standards
 - Provider Course Accreditation Standards
- Qualification Standards

TEQSA Re-registration Process



Re-registration is an evidence-based process, so the emphasis of Murdoch's application was on providing evidence rather than extensive explanations

Provide evidence that was 'sufficient' to meet the standard

Consensus?



The University of Adelaide
The Australian National University
The University of Melbourne
Monash University
The University of New South Wales
The University of Queensland
The University of Sydney
The University of Western Australia

Charles Darwin University
Flinders University
Griffith University
James Cook University
La Trobe University
Murdoch University
University of Newcastle

Curtin University of Technology
University of South Australia
RMIT University
University of Technology Sydney
Queensland University of Technology

Central Queensland University
Southern Cross University
University of Ballarat
University of New England
University of Southern Queensland
University of the Sunshine Coast



Murdoch
UNIVERSITY

Political Environment

- Participation increasing nationally
- Student numbers rising most significantly in outer metropolitan seats (many were marginal)
- Young people see their futures depending on their ability to get a degree, reinforced by experience of siblings
- Changing the political dynamic from an era when few school leavers (less than 10%) went to university

Thank you



OzJMP



<http://au.linkedin.com/pub/john-pike/36/36/119>



Murdoch
UNIVERSITY